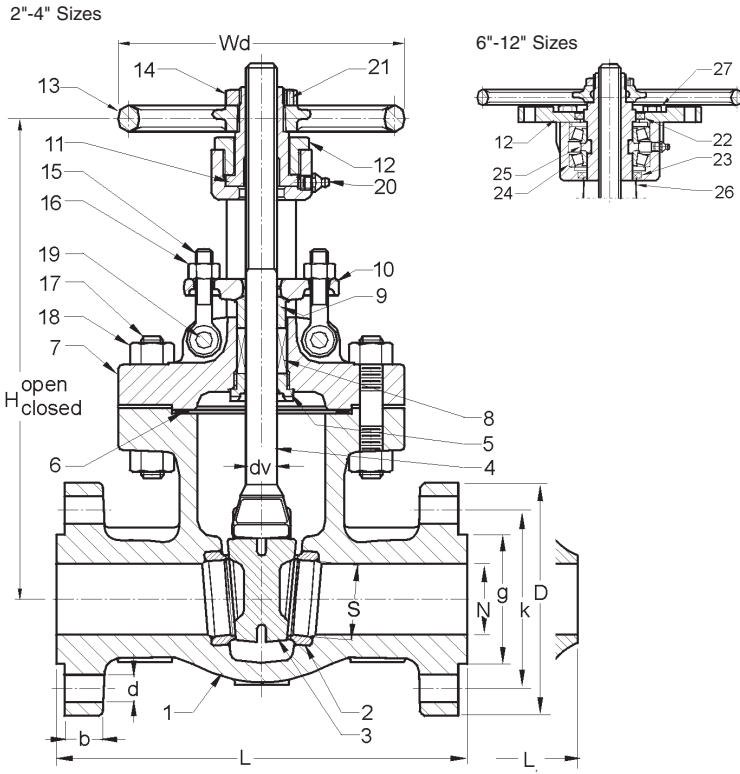


6050CB2 FLANGED ENDS 6053CB2 BUTT-WELD ENDS GATE CLASS 600 2"-12"



SPECIFICATIONS		
Design	API 600, ASME B 16.34	
P-T Rating	ASME B 16.34	
Connections	ASME B 16.5, 16.25	
Face to Face	ASME B 16.10	
Test & Inspection	API 598, RP 591	
MATERIAL LIST		
ITEM	PARTS NAME	MATERIALS
Unless otherwise specified		
1	Body	A216 Gr WCB
2	Seat Ring/Facing	A105 / Co-Cr-W Face or A216 Gr WCB / 13% Cr Face
3	Wedge	2"-6" A182 Gr F6a or A216 Gr WCB/13% Cr Face 8"-12" A216 Gr WCB / 13% Cr Face
4	Stem	A182 Gr F6a
5	Backseat Bushing	A276 Type 410
6	Gasket	Spiral Wound S/S w/ Graphite
7	Bonnet	A216 Gr WCB
8	Packing	Graphoil w/ Braided Rings
9	Gland	A182 Gr F6a
10	Gland Flange	A105
11	Yoke Nut	A439 Type D2
12	Yoke Bushing 2"-4" Yoke Cap Back 6"-12"	A536 Gr 65-45-12 A216 Gr WCB
13	Handwheel	A47 Gr 32510
14	Handwheel Nut	A47 Gr 32510
15	Gland Eyebolt	Carbon Steel
16	Gland Eyebolt Nut	A307 Gr B
17	Body Bonnet Stud Bolt	A193 Gr B7
18	Body Bonnet Stud Nut	A194 Gr 2H
19	Gland Eyebolt Pin	Carbon Steel
20	Grease Fitting	Carbon Steel
21	Set Screw	Carbon Steel
22	Gasket	Carbon Steel
23	Gasket	Carbon Steel
24	Bearing 6"-12"	Commercial
25	Bearing Ring	Carbon Steel
26	Yoke 6-12"	A216 Gr WCB
27	Bolt	Carbon Steel

DIMENSIONS

Size NPS	Port		Line Flange					Face to Face BW L=L1 INCHES (mm)	Height		Stem dv INCHES (mm)	Line Flange Bolts		Turns to Open	Hand-wheel Wd INCHES (mm)	Weight Approx. lbs (kg)
	Dia. N INCHES (mm)	Dia. S INCHES (mm)	Dia. D INCHES (mm)	Thickness (min.) b INCHES (mm)	Bolt Circle Dia. k INCHES (mm)	Hole Dia. d INCHES (mm)	Raised Face Dia. g INCHES (mm)		Open H INCHES (mm)	Closed H INCHES (mm)		Quantity	Size INCHES (metric)			
2	2.00 50.8	2.11 53.6	6.50 165.1	1.00 25.4	5.00 127.0	0.75 19.1	3.62 91.9	11.50 292.1	18.72 475.5	15.77 400.6	0.88 22.2	8 M16	5/8	10.3	9.00 228.6	103 47
2 1/2	2.50 63.5	2.58 65.5	7.50 190.5	1.12 28.4	5.88 149.4	0.89 22.6	4.12 104.6	13.00 330.2	18.90 480.1	15.77 400.6	0.88 22.2	8 M20	3/4	10.3	10.00 254.0	139 63
3	3.00 76.2	3.07 78.0	8.25 209.6	1.25 31.8	6.62 168.1	0.88 22.4	5.00 127.0	14.00 355.6	23.30 591.8	19.29 490.0	1.00 25.4	8 M20	3/4	11.8	10.00 254.0	172 78
4	4.00 101.6	4.09 103.9	10.75 273.1	1.50 38.1	8.50 215.9	1.00 25.4	6.19 157.2	17.00 431.8	28.97 735.8	24.22 615.2	1.25 31.8	8 M22	7/8	9.5	14.00 355.6	317 144
6	6.00 152.4	6.24 158.5	14.00 355.6	1.88 47.8	11.50 292.1	1.12 28.4	8.50 215.9	22.00 558.8	38.03 966.0	31.33 795.8	1.50 38.1	12 M24	1	13.4	18.00 457.2	704 320
8	7.88 200.2	8.11 206.0	16.50 419.1	2.19 55.6	13.75 349.3	1.25 31.8	10.62 269.7	26.00 660.4	46.77 1188.0	38.08 967.2	1.75 44.5	12 M24	1 1/8	17.4	20.00 508.0	1153 524
10	9.75 247.7	10.00 254.0	20.00 508.0	2.50 63.5	17.00 431.8	1.38 35.1	12.75 323.9	31.00 787.4	58.20 1478.3	47.20 1198.9	1.88 47.6	16 M30	1 1/4	19.3	27.00 685.8	1540 700
12	11.75 298.5	12.00 304.8	22.00 558.8	2.62 66.5	19.25 489.0	1.38 35.1	15.00 381.0	33.00 838.2	66.90 1699.3	53.90 1369.1	2.00 50.8	20 M30	1 1/4	22.7	27.00 685.8	2068 940

The information presented on this sheet is correct at the time of publication. Milwaukee Valve reserves the right to change design, and/or material specifications without notice. For the most current information access www.milwaukeevalve.com

