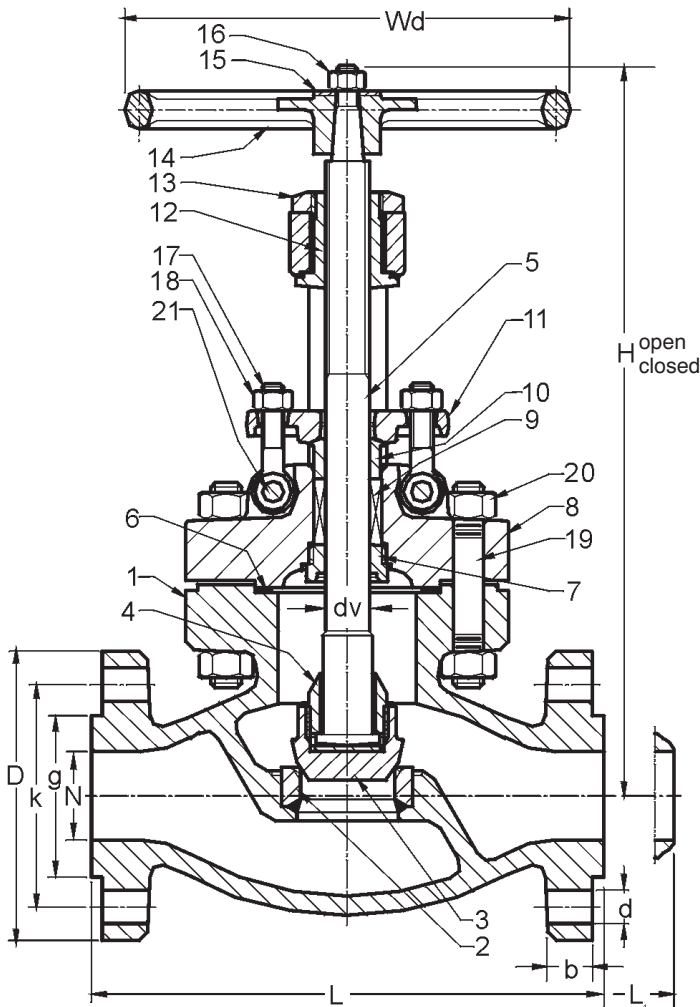


6060CB2 FLANGED ENDS 6063CB2 BUTT-WELD ENDS GLOBE CLASS 600 2"-8"



SPECIFICATIONS		
Design	API 600, ASME B 16.34	
P-T Rating	ASME B 16.34	
Connections	ASME B 16.5, 16.25	
Face to Face	ASME B 16.10	
Test & Inspection	API 598, RP 591	
MATERIAL LIST		
ITEM	PARTS NAME	MATERIALS
Unless otherwise specified		
1	Body	A216 Gr WCB
2	Seat Ring/Facing	A105 / Co-Cr-W Face
3	Disc	A182 Gr F6a
4	Disc Nut	A182 Gr F6a
5	Stem	A182 Gr F6a
6	Gasket	Spiral Wound S/S w/ Graphite
7	Backseat Bushing	A276 Type 410
8	Bonnet	A216 Gr WCB
9	Packing	Graphoil w/ Braided Rings
10	Gland	A182 Gr F6a
11	Gland Flange	A105
12	Yoke Nut	A439 Type D2
13	Yoke Bushing	A47 Gr 32510
14	Handwheel	A47 Gr 32510
15	Lockwasher	A105
16	Handwheel Nut	Carbon Steel
17	Gland Eyebolt	Carbon Steel
18	Gland Eyebolt Nut	A307 Gr B
19	Body Bonnet Stud	A 193 Gr B7
20	Body Bonnet Stud Nut	A 194 Gr 2H
21	Gland Eyebolt Pin	Carbon Steel

DIMENSIONS

Size NPS	Nominal Size Dia. N INCHES (mm)	Line Flange					Face to Face BW L=L1 INCHES (mm)	Height		Stem dv INCHES (mm)	Line Flange Bolts		Turns to Open	Hand- wheel Wd INCHES (mm)	Weight Approx. lbs (kg)
		Dia. D INCHES (mm)	Thickness b INCHES (mm)	Bolt Circle Dia. k INCHES (mm)	Hole Dia d INCHES (mm)	Raised Face Dia. g INCHES (mm)		Open H INCHES (mm)	Closed H INCHES (mm)		Quantity	Size INCHES (metric)			
2	2.00 50.8	6.50 165.1	1.00 25.4	5.00 127.0	0.75 19.1	3.62 91.9	11.50 292.1	17.64 448.1	16.30 414.0	1.00 25.4	8	5/8 M16	8.4	10.00 254.0	97 44
2 1/2	2.50 63.5	7.50 190.5	1.12 28.4	5.88 149.4	0.88 22.4	4.12 104.6	13.00 330.2	17.84 453.1	16.50 419.1	1.00 25.4	8	3/4 M20	8.4	10.00 254.0	134 61
3	3.00 76.2	8.25 209.6	1.25 31.8	6.62 168.1	0.88 22.4	5.00 127.0	14.00 355.6	20.67 525.0	19.10 485.1	1.25 31.8	8	3/4 M20	9.6	14.00 355.6	172 78
4	4.00 101.6	10.75 273.1	1.50 38.1	8.50 215.9	1.00 25.4	6.19 157.2	17.00 431.8	24.42 620.3	22.41 569.2	1.50 38.1	8	7/8 M22	7.8	18.00 457.2	295 134
6	6.00 152.4	14.00 355.6	1.88 47.8	11.50 292.1	1.12 28.4	8.50 215.9	22.00 558.8	32.91 835.9	29.80 756.9	1.88 47.6	12	1 M24	9.6	24.00 609.6	575 261

Rev. 1

The information presented on this sheet is correct at the time of publication. Milwaukee Valve / Hammond Valve reserves the right to change design, and/or material specifications without notice. For the most current information access www.milwaukeevalve.com or www.hammondvalve.com

