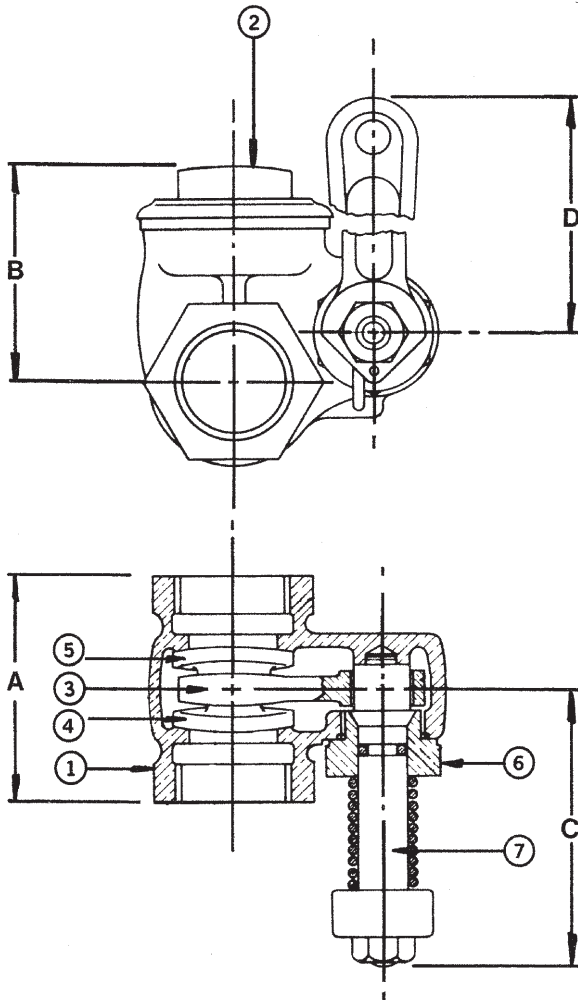


# GATE 902

## BRONZE - QUICK OPENING

150 lb. WOG† • O-Ring Stem Packed • Tank Trucks • Bulk Plants  
 Double Disc • Spring Loaded • Lever Operated • Threaded Ends



### MATERIAL LIST

NO.	PART	MATERIAL	SPECIFICATIONS
1	Body	Bronze	ASTM B62
2	Cap	Bronze	ASTM B62
3	Lever	Bronze	ASTM B62
4	Male Disc	Brass	ASTM B16
5	Female Disc	Brass	ASTM B16
6	Bonnet (Center Piece)	Bronze	ASTM B62
7	Stem	Brass	ASTM B16
8	Lever Handle	Malleable Iron	ASTM B16
9	O-Ring	Buna-N	
10	Handle Nut	Steel	
11	Torsion Spring	Spring Steel - Cadmium Plated	

DIMENSIONS - INCHES / MILLIMETERS					
Units	Size	A	B	C	D
Inches	3/4	2.25	2.19	2.50	4.75
mm	19.1	57.2	55.6	63.5	120.7
Inches	1 1/4	2.88	2.88	2.94	8.19
mm	31.8	73.0	73.0	74.6	208.0

† Non-Shock

Rev. 5

**INNOVATION** IN EVERY VALVE



**MILWAUKEE VALVE**

[www.milwaukeevalve.com](http://www.milwaukeevalve.com)

The information presented on this sheet is correct at the time of publication. Milwaukee Valve reserves the right to change design, and/or material specifications without notice. For the Installation, Operation and Maintenance Manual (IOM) see the engineering section on our website. For the most current information access [www.milwaukeevalve.com](http://www.milwaukeevalve.com)

Printed on recycled paper with soy ink. 05/05