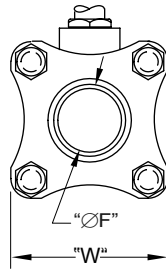


BA-350TE-G/350STE-G

1/2"-2"

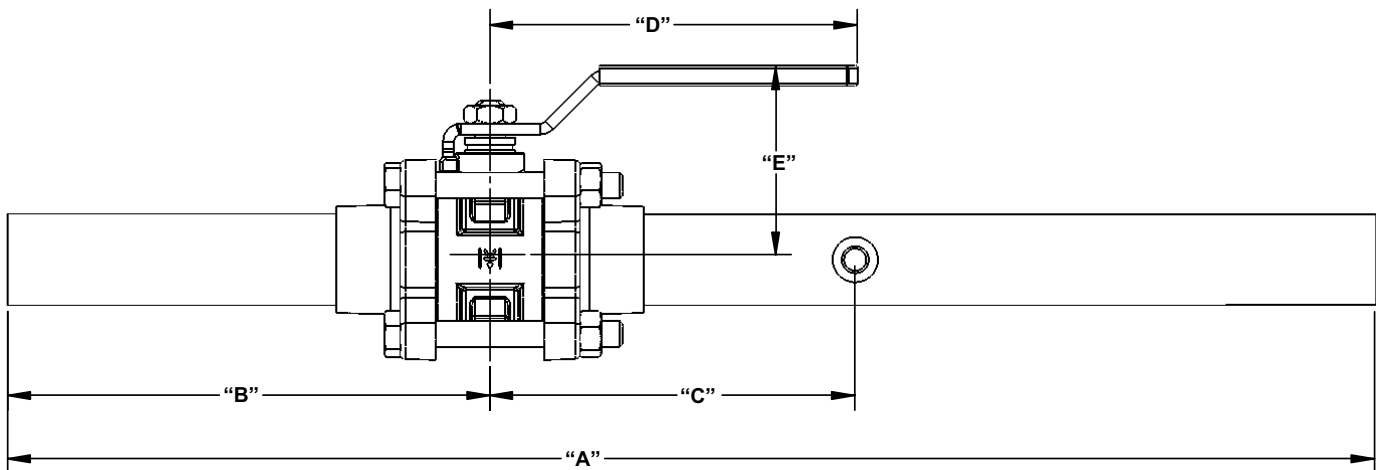
**BRONZE BALL VALVE
THREE-PIECE, FULL-PORT
600 WOG / 150 SWP
EXTENDED TUBE ENDS WITH 1/8" NPT GAUGE PORT
IN-LINE REPAIRABLE**

MSS SP-110



Available Options.

- * Male Tube Ends-Type "K" (Standard)
- * Female Tube Ends-Type "L" (-F)
- * Cleaned For Oxygen Service
Accordance With NFPA 99 (-OC)
- * Stainless Steel Ball And Stem (-S)
- * Stainless Steel Locking Lever (-LD)
- * Oval Handle (-OH)
- * Oval Locking Handle (-LO)
- * Stem Extension (-XH)
- * Stainless Steel Lever Handle (-SH)



DIMENSIONS

	UNITS	1/2" DN15	3/4" DN20	1" DN25	1-1/4" DN32	1-1/2" DN40	2" DN50
A	INCH mm	21 533	21 533	21 533	21 533	21 533	21 533
B	INCH mm	6.9 175	7 178	7 178	7.4 188	7.6 193	7.7 196
C	INCH mm	6.4 163	6.1 155	5.9 150	5.5 140	5.4 137	5 127
D	INCH mm	3.8 97	4.8 122	4.8 122	6.5 165	7.4 188	7.4 188
E	INCH mm	1.6 41	2.3 58	2.4 61	2.8 71	3.1 79	3.6 91
ØF	INCH mm	0.5 13	0.75 19	1 25	1.25 32	1.5 38	2 51
W	INCH mm	1.9 48	2.2 56	2.5 64	3 76	3 76	4 102
Cv		17	31	60	110	185	360

Note: DN (Diameter Nominal) = Metric equivalent size

Pressure temperature charts contain valve seat and body ratings for standard valves. Solder end valves are de-rated by the limitations of the joint as specified in ASME 16.18. Brazing installations can be likewise derated. Consult ASME 16.18 and the American Welding Society for the actual joint ratings of the material being used for the specific application. Pressure and Temperature ratings may be further derated in accordance with the pressure rating associated with the type of copper tube Used for the stub end. Call the factory for accurate application data.

* Designed for soft solder or brazed installation without disassembly.

Rev. 1

The information presented on this sheet is correct at the time of publication. Milwaukee Valve reserves the right to change design, and/or material specifications without notice. For the most current information access www.milwaukeevalve.com

