

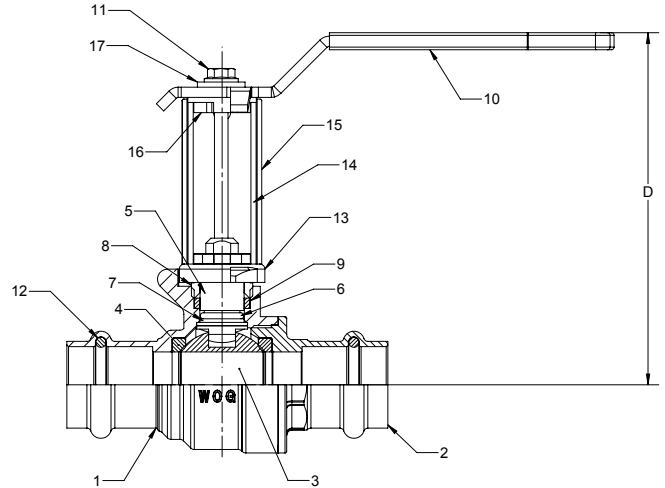


# BA-481B\* 1/2" - 2"

**Brass Ball Valve  
Two-Piece, Full Port  
Press X Press Ends  
With Extension Stem  
& Memory Stop**

**200 PSIG @ 250° F**

MATERIALS LIST			
ITEM	PART	MATERIAL	ASTM/SPEC
1	Body	Brass, Forged	B283
2	Tailpiece	Brass, Forged	B283
3	Ball	CP Brass Ball	B283
4	Ball Seat	PTFE	Commercial
5	Stem	Brass	B124
6	Stem O-Ring	Buna-N	D2000
7	Thrust Washer	PTFE	Commercial
8	Gland Nut	Brass	B124
9	Packing	PTFE	Commercial
10	Handle	Zinc Plated Steel	B633
11	Handle Bolt	Zinc Plated Steel	Commercial
12	Tube O-Ring	EPDM	D2000 NSF61
13	Stem Stop Plate	Zinc Plated Steel	Commercial
14	Internal Extension Tube	Zinc Plated Steel	Commercial
15	External Extension Tube	Zinc Plated Steel	Commercial
16	Upper Stem Adaptor	Zinc Plated Steel	Commercial
17	Memory Stop	Zinc Plated Steel	Commercial



\*Ultra Press Valves are designed and qualified for use in copper tubing systems only, Types K & L per ASTM B88.

DIMENSIONS							
Size		1/2"	3/4"	1"	1-1/4"	1-1/2"	2"
		DN15	DN20	DN25	DN32	DN40	DN50
A	INCH	0.51	0.76	0.98	1.26	1.50	2.00
	mm	13	19	25	32	38	51
B	INCH	3.03	3.58	3.98	4.51	5.50	6.44
	mm	77	91	101	114	140	164
C	INCH	1.41	1.66	1.80	2.10	2.50	2.99
	mm	36	42	46	53	64	76
D	INCH	3.71	4.18	4.35	4.58	4.77	5.21
	mm	95	106	111	116	121	132
E	INCH	3.14	4.35	4.35	5.00	5.00	6.90
	mm	80	110	110	127	127	175
F TUBE DIA	INCH	0.63	0.88	1.13	1.38	1.63	2.13
	mm	15	20	25	32	40	50
G	INCH	1.38	1.61	2.00	2.44	2.67	3.29
	mm	35	41	51	62	68	83
Cv	GPM	18	40	72	112	161	287
TORQUE	INCH-IN	19	58	69	89	124	210
	N.m	2.1	6.5	7.8	10	14	24
WEIGHT	LBS.	0.41	0.80	1.15	1.66	2.47	4.90
	grams	186	363	521	753	1120	2222



The information presented on this sheet is correct at the time of publication. Milwaukee Valve reserves the right to change design, and/or material specifications without notice. For the Installation, Operation and Maintenance Manual (IOM) see the engineering section on our website. For the most current information access [www.milwaukeevalve.com](http://www.milwaukeevalve.com)

