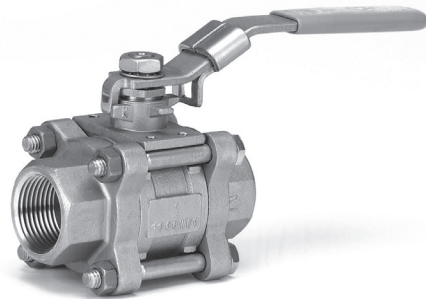


30 Series Ball Valve
Milwaukee Valve Company
30CC/CS/SS



3 Piece Full Port Ball Valve

Features and Benefits

- Locking lever for safety lockout
- Multiple V-ring stem packing arrangement for longer packing life
- Vent hold in ball slot for cavity venting
- Mounting pad for easy actuation
- TFE/Graphite Body Seal
- NACE Compliant for sour gas service
- Blow-out proof stem
- Cantilever seat design for low operating torque
- Meets ASME, MSS-SP and ASTM specifications

Specifications and Product Range

- Valve Sizes 1/4" through 2"
- Meets MSS-SP-110
- Valves meet NACE MRO175
- Socket Weld and NPT Connections

Pressure Ratings:	PSI
1/4" through 2"	1000

Valve is rated 150 psi steam @ 365°F with RPTFE seats

Operators Available

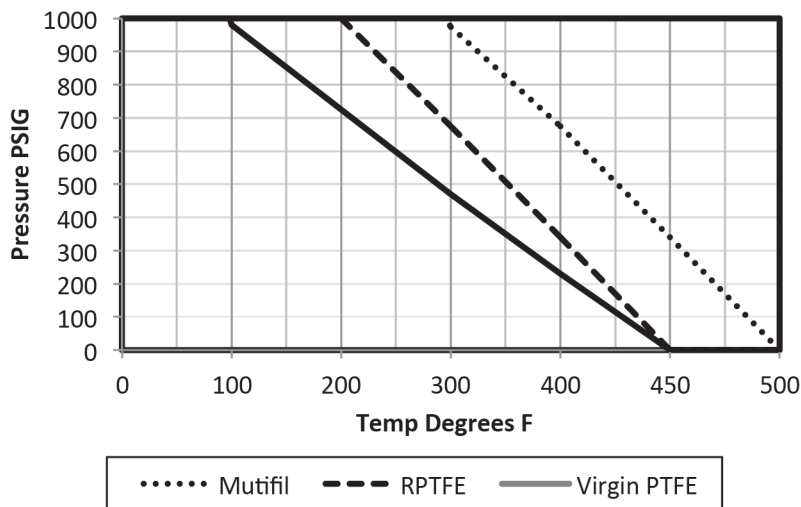
- Locking lever handle and ovals
- Pneumatic and Electric Actuation

Materials of Construction

- Body: WCB Carbon steel or CF8M Stainless Steel
- Ball: 316 Stainless
- Stem: 316 Stainless
- Seats: PTFE, RPTFE, Multi-Fil
- Packing: PTFE/Graphite
- Handles: Stainless Steel/Carbon Steel

Torque & Cv Values

VALVE SIZE	MAXIMUM BREAKAWAY TORQUE (in lbs)	Cv(GPM)
1/4-3/8	30	9
1/2	50	10
3/4	70	31
1	125	49
1-1/4	210	85
1-1/2	360	110
2	600	360



How to Order Milwaukee Valve 30 Series Three Piece Ball valve										
Series:	Body:	Ball/Stem Material:	End Connection Type:	Port Size:	Seat Material:	External Options:	Internal Options:	Size		
30-Three Piece 1000 WOG	C = Carbon Steel (WCB) S = Stainless Steel (CF8M)	S = Stainless Steel (316) C = Carbons Steel Plated	0 = NPT Female 1 = Socket-Weld 6 = FNPT/Socket-Weld	F = Full Port	01 = Virgin PTFE 02 = Reinforced PTFE (15% Gls.) 03 = Multi-Fill PTFE (steam seat 250 psi)	LL = Stainless Latch-Lock Handle LS = Stainless Latch-Lock Handle-Spring-Loaded LO = Locking Stainless Oval Handle-Spring-Loaded OS = Stainless Oval Handle XH = Extended Handle (2") XLH = Extended Handle (4 1/2")	AD = Assembly Dry GB = Grounded Ball GS = Grounded Stem VB = Vented Ball	014 - 1/4" 038 - 3/8" 012 - 1/2" 034 - 3/4" 100 - 1" 114 - 1 1/4" 112 - 1 1/2" 200 - 2"		

Example Product Numbers	
30CSOF-02-LL - 34 (3/4" Three Piece Full Port Carbon Steel Body, Stainless Trim, Female NPT End Pieces, RPTFE Seats, SS Latch-Lock Handle)	
30CSOF-02-LL-VB - 34 (3/4" Three Piece Full Port Carbon Steel Body, Stainless Trim, Female NPT End Pieces, RPTFE Seats, SS Latch-Lock Handle, Vented Ball)	

Teflon is a registered trademark of Dupont.

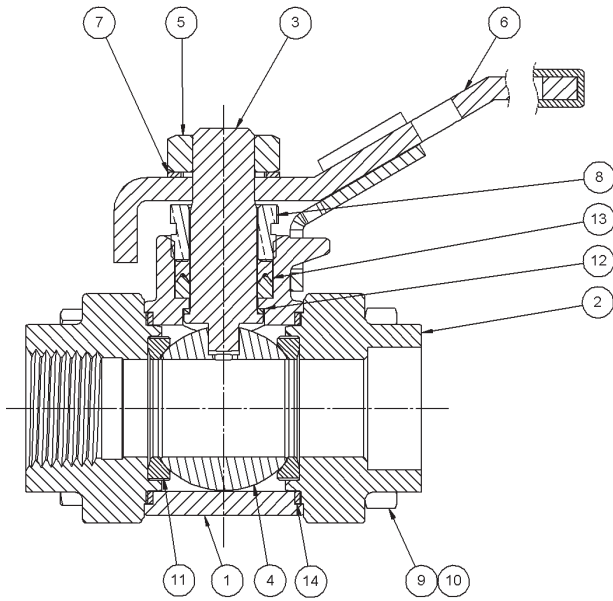
The information presented on this sheet is correct at time of publication. Milwaukee Valve reserves the right to change design and/or materials without notice. For our Installation, Operation and Maintenance Manual and the most current product information go to www.milwaukeevalve.com.
 ⚠ State of California Prop 65 **WARNING:** Cancer and Reproductive Harm. For more information visit www.p65warnings.ca.gov.



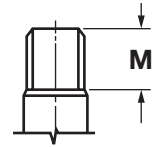
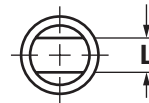
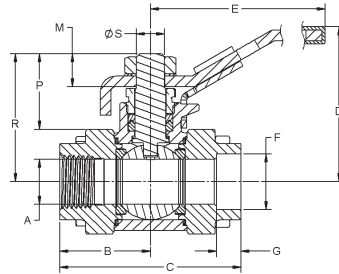
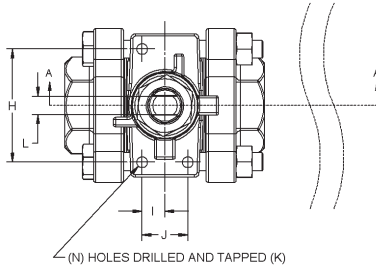
30CC/CS/SS

3-Piece Full Port Ball Valve

MATERIAL LIST



DESCRIPTION	30CCOF-02	30CSOF-02	30SSOF-02
1. Body	Carbon Steel ASTM A216, WCB	Carbon Steel ASTM A216, WCB	Stainless Steel ASTM A351/744, CF8M
2. Endcap	Carbon Steel ASTM A216, WCB	Carbon Steel ASTM A216, WCB	Stainless Steel ASTM A351/744, CF3M
3. Stem	Carbon Steel AISI - 12L14	Stainless Steel ASTM A276, Type 316	Stainless Steel ASTM A276, Type 316
4. Ball	Carbon Steel AISI -12L14	Stainless Steel ASTM A276, Type 316	Stainless Steel ASTM A276, Type 316
5. Handle Nut	Low Carbon Steel Zinc-Plated	Stainless Steel 18-8	Stainless Steel 18-8
6. Handle Assembly	AISI 1010 Steel Zinc-Plated	Stainless Steel 18-8	Stainless Steel 18-8
7. Lock Washer	Carbon Steel Plated	Stainless Steel Type 304	Stainless Steel Type 304
8. Packing Nut	Carbon Steel AISI - 12L14	Carbon Steel AISI - 12L14	Stainless Steel ASTM A276, Type 316
9. Body Capscrews	SAE J429 Gr.8 Zinc-Plated	SAE J429 Gr.8 Zinc-Plated	ASTM F593 Gr. C
10. Body Nuts	SAE J429 Gr.8 Zinc-Plated	SAE J429 Gr.8 Zinc-Plated	ASTM F593 Gr. C
11. Seats (02)	15% Glass-Filled, Reinforced PTFE	15% Glass-Filled, Reinforced PTFE	15% Glass-Filled Reinforced PTFE
12. Thrust Washer	PTFE	PTFE	PTFE
13. Packing	PTFE	PTFE	PTFE
14. Body Seal	PTFE (01) Graphoil (03)	PTFE (01) Graphoil (03)	PTFE (01) Graphoil (03)



DIMENSIONS

SIZE	1/4"		3/8"		1/2"		3/4"		1"		1-1/4"		1-1/2"		2"	
	IN	MM	IN	MM	IN	MM	IN	MM	IN	MM	IN	MM	IN	MM	IN	MM
A	.48	12.2	.50	12.7	.69	17.5	.75	19.1	1.00	25.4	1.25	31.8	1.50	38.1	2.00	50.8
B	1.28	32.5	1.28	32.5	1.40	35.6	1.72	43.7	1.94	49.3	2.38	60.5	2.62	66.5	3.05	77.5
C	2.56	65.0	2.56	65.0	2.81	71.4	3.44	87.4	3.87	98.3	4.75	121.0	5.24	133.0	6.10	154.9
D	1.83	46.5	1.83	46.5	2.52	64.0	2.79	70.9	2.93	74.4	3.18	80.8	3.37	85.6	3.60	91.4
E	3.88	98.6	3.88	98.6	5.88	149.0	5.88	149.0	5.88	149.0	7.75	197.0	7.75	197.0	7.75	197.0
F*	NA		NA		.86	21.97	1.08	27.31	1.34	34.04	1.69	42.8	1.93	48.9	2.42	61.37
G*	NA		NA		.50	12.7	.56	14.2	.68	17.3	.81	20.6	.87	22.1	1.06	26.9
H	1.12	28.4	1.12	28.4	1.58	40.1	1.58	40.1	1.58	40.1	1.46	37.1	1.63	41.4	2.25	57.2
I	—	—	—	—	.32	8.1	.32	8.1	.32	8.1	.56	14.2	.76	19.3	1.05	26.7
J	—	—	—	—	.64	16.3	.64	16.3	.64	16.3	1.13	28.7	1.53	38.9	2.10	53.3
K	10-24		10-24		10-24		10-24		10-24		1/4-20		1/4-20		1/4-20	
L	.197	5.0	.197	5.0	.276	7.0	.276	7.0	.276	7.0	.356	9.0	.356	9.0	.356	9.0
M	.33	8.4	.33	8.4	.51	13.1	.51	13.1	.51	13.1	.60	15.4	.605	15.4	.605	15.4
N	2		2		3		3		3		4		4		4	
P	.945	24.0	.945	24.0	1.25	31.75	1.25	31.75	1.25	31.75	1.375	34.93	1.50	38.10	1.50	38.10
R	1.63	41.33	1.63	41.40	1.97	50.04	2.30	58.37	2.47	62.79	2.90	73.74	3.14	79.73	3.57	90.63
S	.31	7.87	.31	7.90	.44	11.07	.44	11.07	.44	11.07	.56	14.25	.56	14.25	.56	14.25
WT.	LBS	KILOS	LBS	KILOS	LBS	KILOS	LBS	KILOS	LBS	KILOS	LBS	KILOS	LBS	KILOS	LBS	KILOS
	—	—	—	—	1.53	3.37	2.51	5.52	3.27	7.19	5.24	11.53	7.32	16.10	11.91	26.20

* These dimensions apply only to socket-weld end valves.

The information presented on this sheet is correct at time of publication. Milwaukee Valve reserves the right to change design and/or materials without notice. For our Installation, Operation and Maintenance Manual and the most current product information go to www.milwaukeevalve.com.

⚠ State of California Prop 65 **WARNING:** Cancer and Reproductive Harm. For more information visit www.p65warnings.ca.gov.

