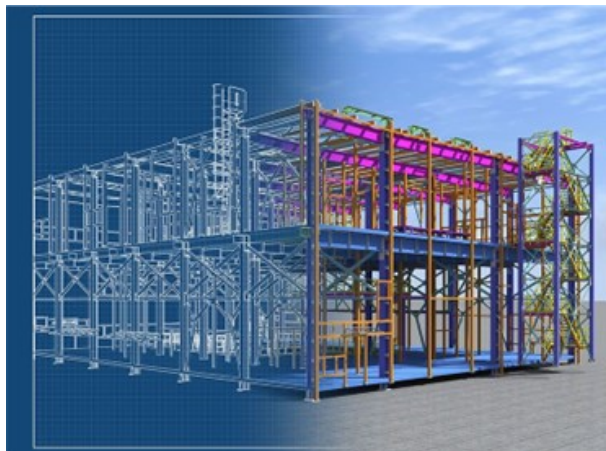


March 8, 2023

## Valve Schedules... Where The Spec Becomes A System.

At some point in the design process of a commercial building's mechanical systems, the project moves from the on-paper theoretical to the actual installation. Specifying engineers convert their energies from identifying the systems required for a building to laying out the actual build and designating the piping, joints and valves that will be installed.



The Valve Schedule signifies this conversion. When bidding a job, at the end of the valve specifications section, the bid document provides a basis for overall selection

of the valves to be used in each individual system on the project.

The Valve Schedule Bootcamp will dive into the “why” of each choice of valve for a given service. System by system, we'll look at the various types of valves, their design, benefits, materials of construction and so on. While not meant to be an exhaustive list of possibilities, this presentation will lay the groundwork for selecting valves with performance and reliability in mind.

Join Milwaukee Valve Director of Marketing Bob Rudman, as he teams up with Matt Martin, Vice President of Specification Sales at James Martin Company, a manufacturers' representative company. The webinar will begin

**VALVE SCHEDULE  
BOOTCAMP**



**TUESDAY, MARCH 21 1:00 CST**  
[\(Click here to register\)](#)



at 1:00 (CST) and run for 45-50 minutes, followed by a short Q&A session. Continuing Education Units (CEUs) are available from the American Society of Plumbing Engineers (**ASPE**). A link to the registration page can be found at the [Milwaukee Valve](#) website today or by clicking [HERE](#). Registration is required for Live or On-Demand attendance.



**MILWAUKEE VALVE**

[www.milwaukeevalve.com](http://www.milwaukeevalve.com)  
262.432.2700



**HAMMOND VALVE**

[www.hammondvalve.com](http://www.hammondvalve.com)  
262.432.2702



[www.milwaukeevalve.com](http://www.milwaukeevalve.com)  
262.432.2700