

May 13, 2026

## TØV Handles High Pressure Applications Milwaukee Valve Has MORE Triple Offset! More Sizes, Still No Leaks!



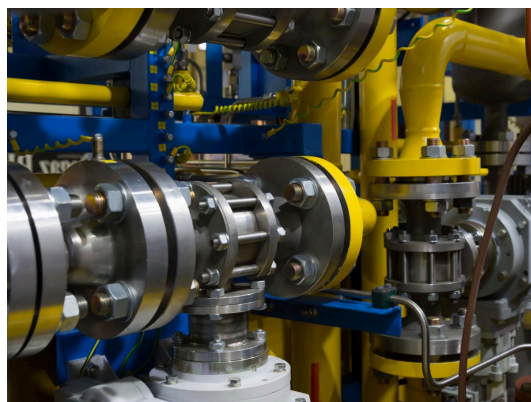
Phase 1 of the new product introduction was offering Lug and Wafer designs in 3-inch thru 12-inch sizes. Phase 2 expands the product offering from 14-inch through 24-inch.

Encouragingly, **A number of sales inquiries have been received for the larger dimension valves.** The new TØV series from Milwaukee Valve is designed for higher pressures and temperatures than any other valve in our extensive product line. This new design delivers bidirectional, zero-leak sealing across a wider variety of critical applications, including:



### Power And District Heating

- Steam Piping & Condensate
- Steam Isolation
- Geothermal Steam



### Critical Isolation

- Tank Switching & Isolation
- Manifold System Isolation
- Metering Systems
- SCADA Systems



### Temperature Control Systems

- Hot Water Control Systems
- Cooling Water Systems
- Seawater

- Thermal Fluids



### Refining & Petrochemical Processing

- Hydrocarbon Processing
- Hot Gases / Sulfur / Tail Gas / Flare Gas

### Chemical Processing

- Hydrogen
- Oxygen
- Chemical Solvents
- Chlorinated Solvents



### Liquefied Natural Gas

- LNG Production
- LNG Storage

To learn more about new Milwaukee Valve TØV valves, and download spec sheets or access 3D CAD drawings and BIM modelling, visit our [TØV](https://www.milwaukeevalve.com) product page at [www.MilwaukeeValve.com](https://www.MilwaukeeValve.com). While there, you'll also find downloadable product literature, and Milwaukee Valve representative contact information to help you with application questions on any Milwaukee Valve products. New "technical literature" will be posted there when available.



**MILWAUKEE VALVE**

[www.milwaukeevalve.com](https://www.milwaukeevalve.com)  
262.432.2700



**HAMMOND VALVE**

[www.hammondvalve.com](https://www.hammondvalve.com)  
262.432.2702

16550 West Stratton Drive, New Berlin, WI 53151



Milwaukee Valve | 16550 West Stratton Avenue | New Berlin, WI 53151 US

[Unsubscribe](#) | [Update Profile](#) | [Constant Contact Data Notice](#)



Try email marketing for free today!