

The More You Know



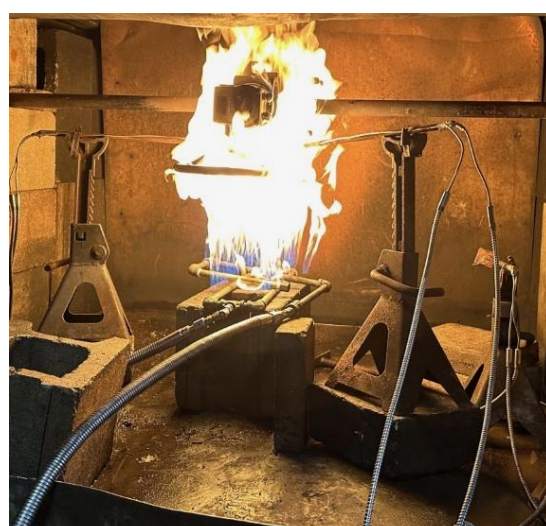
July 30, 2025

Milwaukee Valves' TØV is Designed to Stand the Heat.

Among the important attributes of the new Triple Offset TØV valve is that it has been certified to meet the standards of API 607, making the valve suitable for fire-safe applications and providing reliable operation in critical situations. But what are fire-safe valves?



The American Petroleum Institute (API) has developed fire tests for valves used in the oil and gas industries. API 607 confirms the pressure-containing capability of quarter-turn valves under pressure during and after the fire test.



During fire testing, a pressurized closed valve filled with water is completely enveloped in high-temperature flames (around 750°C to 1000°C) for 30 minutes. The valve's ability to prevent leakage during and after the fire is measured to ensure it meets safety standards.

Simply put, fire-safe valves are designed to hold pressure and isolate flow, even if internal components are damaged by heat so that the valve can still perform its function during a fire. This limits further danger to people, equipment, or the wider site. These valves maintain their functionality under extreme temperatures, preventing the escape of fluids and gases. TØV are fire-safe by design, due to the composite seat (graphite & SS), graphite bottom seals and graphite packing.



Fire-safe valves are crucial in industries such as oil and gas, refinery, chemical, and petrochemical, where risk of fire accidents is higher. By ensuring a reliable shut-off in the event of a fire, these valves play a vital role in maintaining safety and preventing catastrophic incidents.

In addition to the TØV, Milwaukee Valve offers several fire-safe ball valves, including the following:

- 10 Series Unibody
- 22 Series 2-Piece Seal-Welded
- 35 Series 3-Piece
- 41 Series 2-Piece Seal-Welded
- F201 2-Piece Flanged-End
- F91 Series Unibody Flanged-End

To learn more about new Milwaukee Valve TØV valves, and download spec sheets or access 3D CAD drawings and BIM modelling, visit our [TØV](#) product page at www.MilwaukeeValve.com. While there, you'll also find downloadable product literature, and Milwaukee Valve representative contact information to help you with application questions on any Milwaukee Valve products.



MILWAUKEE VALVE
www.milwaukeevalve.com
262.432.2700



HAMMOND VALVE
www.hammondvalve.com
262.432.2702

16550 West Stratton Drive, New Berlin, WI 53151



Milwaukee Valve | 16550 West Stratton Avenue | New Berlin, WI 53151 US

[Unsubscribe](#) | [Update Profile](#) | [Constant Contact Data Notice](#)



**Constant
Contact**

Try email marketing for free today!