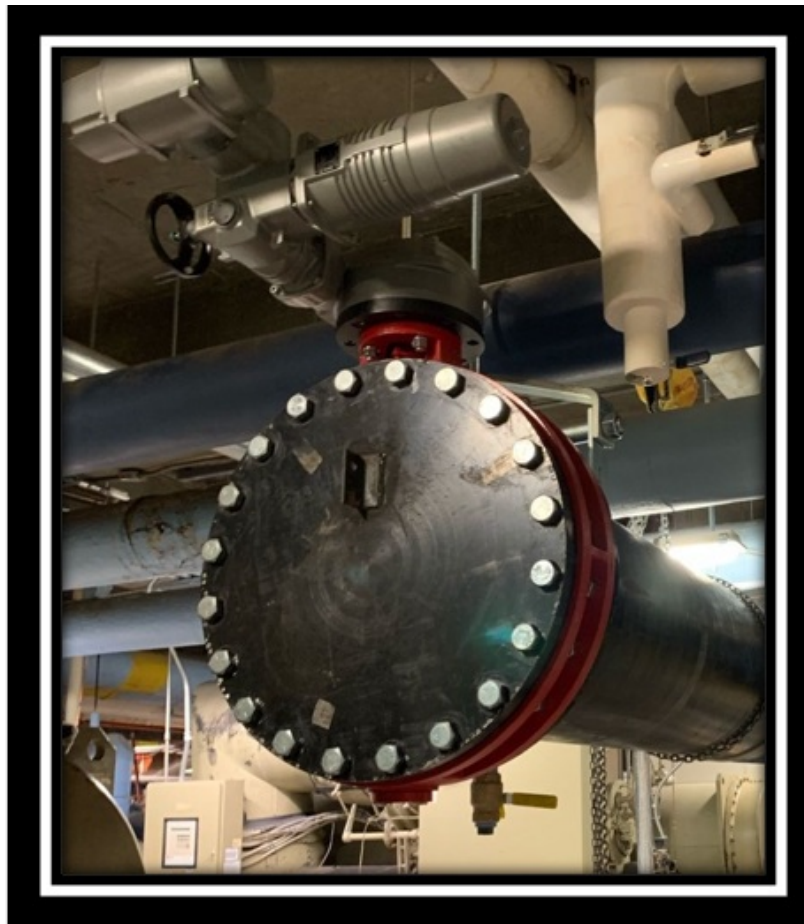


BUTTERFLY BOOTCAMP III – Installation & Field Service Tips

On Tuesday, regional manager Jeff Kiefer wrapped up this year's butterfly coverage with a webinar on installation and field service tips for resilient-seated and double offset high performance butterfly valves. If you missed the webinar, you can still tune in to learn more about butterfly installation guidelines, dead-end service and routine troubleshooting of minor issues encountered in the install.



The webinar runs 50 minutes, including a good Q&A exchange at the end. If you missed the webinar, you can view it [HERE](#), or pass it along to others within your organization. (Registration required.) This webinar qualifies for CEU credits from ASPE, even if viewed on-demand.

Today, Milwaukee Valve celebrated the ceremonial first cut of steel for the newest nuclear-powered aircraft carrier, ***Doris Miller*** (CVN 81). The ceremonial cut took place at Newport News Shipbuilding in Virginia, the location of the ship's construction. Most of the ship's valves are being manufactured at the Prairie Du Sac, Wisconsin bronze foundry and manufacturing facility.



Milwaukee Valve will be providing bronze gate valves, globe valves, check valves and scupper valves, double offset and triple offset butterfly valves and a variety of ball valves to the construction of the *Doris Miller*. CVN 81 will be the fourth *Gerald R. Ford*-class aircraft carrier currently under construction with suppliers across the country.



Milwaukee Valve supplied a complement of products to *Gerald R. Ford* (CVN 81).

Doris Miller is the first U.S. Navy aircraft carrier named for an African American and the first carrier named in honor of a sailor for actions while serving in the enlisted ranks. Miller is credited with heroic actions while serving aboard the *West Virginia* (BB 48). during the attack on Pearl Harbor on Dec. 7, 1941. Miller's bravery earned him the Navy Cross. *Doris Miller's* keel is scheduled to be laid in 2026 and delivered to the Navy in 2032.



MILWAUKEE VALVE

www.milwaukeevalve.com
262.432.2700



HAMMOND VALVE

www.hammondvalve.com
262.432.2702



www.milwaukeevalve.com
262.432.2700

16550 West Stratton Drive, New Berlin, WI 53151

