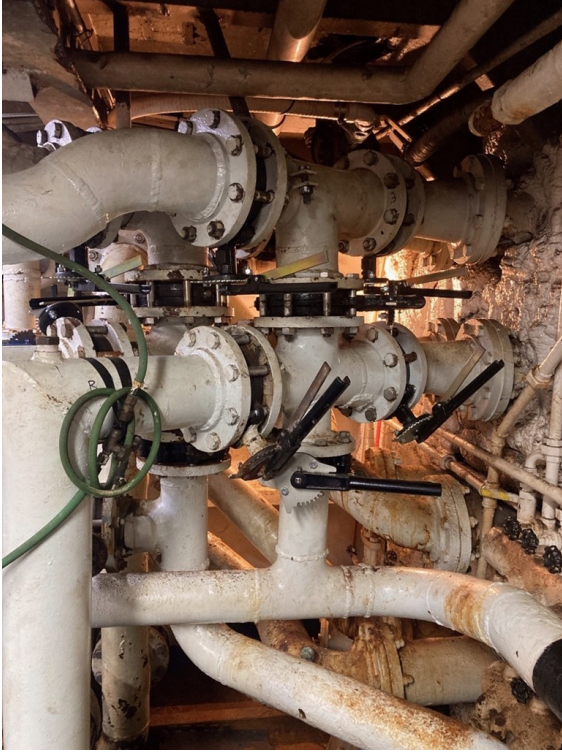


A Picture Is Worth A Thousand Words...

Previously in this newsletter, we have discussed “correct” shaft orientation for resilient-seated butterfly valves. Generally, there are a couple of schools of thought when it comes to a preferred orientation. One widely-held opinion is, in horizontal piping, that installing with the stem horizontal (valve on its side) allows any debris or solids in the line to pass over the liner and not accumulate in the stem areas. Others will suggest that the stem be installed vertically (valve upright) to minimize side-loading of the nylon bearings and liners due to the weight of the disc, particularly in larger sizes.

Both arguments are valid and have merits depending on the installation, media, method of operation and other factors. Our resilient butterfly IOM has the following statement, *“The valve can be installed in the pipeline with the shaft in the vertical, horizontal or other intermediate diagonal position, based on the application.”* Therefore, whether the customer wants to install it right-side up, upside down, or somewhere in between, we can fully support their required position of installation for ease of operation.

But sometimes a picture is worth a thousand words, and really drives home the point... the photos below were submitted, showing numerous Hammond valves installed every which way. One of the unique details is that this occurred in the mechanical room, below decks, on a commercial work boat. The valve installer had to get pretty creative, due to severe space limitations. But the space limitations in the mechanical room of a commercial building usually aren't expansive, and the same attention to detail could only provide benefits.



For questions on stem orientation or anything about butterfly valves, contact your [Milwaukee Valve regional manager or sales representative](#) today. Get complete specs and features for all Milwaukee Valve butterfly valve products at www.MilwaukeeValve.com.



MILWAUKEE VALVE

www.milwaukeevalve.com
262.432.2700



HAMMOND VALVE

www.hammondvalve.com
262.432.2702



www.milwaukeevalve.com
262.432.2700

16550 West Stratton Drive, New Berlin, WI 53151



Try email marketing for free today!