

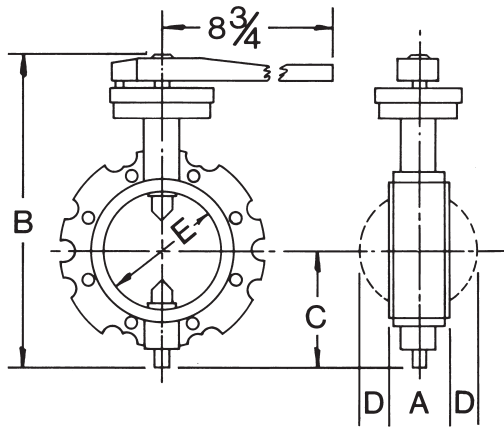
# BUTTERFLY P-2860X, P-2860H ALUMINUM

Tank Trucks • Bulk Plants • Dry Bulk Plants  
90° Arc • Quick Open

This Butterfly valve of rugged lightweight aluminum is designed to accept a variety of flange fittings. It has been developed specifically for tank truck application.

Model P-2860X has a high abrasion seat for dry bulk applications to 200°F and provides longer life and more durability than valves having Buna type seats.

Model P-2860H has a Hydrin liner for air lines and a wide variety of chemicals to 300°F. Discs are stainless steel.



LOCATES BETWEEN A.N.S.I., T.T.M.A. AND  
COMPETITIVE SPECIAL FLANGES

## DIMENSIONS-INCHES

SIZE	A	B	C	D	E
2	1 3/4	8 3/16	3 1/8	11/32	2 3/8
3	1 7/8	9 7/8	3 3/4	13/16	3 3/8
4	2 1/8	10 13/16	4 1/4	1 1/8	4 3/8

## FLANGE SPECIFICATIONS-INCHES

SIZE	A.N.S.I. B16.24 150 LB.			T.T.M.A.			COMPETITIVE		
	B.C DIA.	BOLT DIA.	NO. BOLTS	B.C DIA.	BOLT DIA.	NO. BOLTS	B.C DIA.	BOLT DIA.	NO. BOLTS
2	4 3/4	5/8	4	3 3/4	3/8	6	4 1/4	3/8	4
3	6	5/8	4	4 7/8	3/8	8	4 7/8	3/8	6
4	7 1/2	5/8	8	5 7/8	3/8	8	7	1/2	6

The information presented on this sheet is correct at time of publication. Milwaukee Valve reserves the right to change design and/or materials without notice. For our Installation, Operation and Maintenance Manual and the most current product information go to [www.milwaukeevalve.com](http://www.milwaukeevalve.com).  
⚠ State of California Prop 65 **WARNING:** Cancer and Reproductive Harm. For more information visit [www.p65warnings.ca.gov](http://www.p65warnings.ca.gov).

