

BB1-10A0 1"- 2"

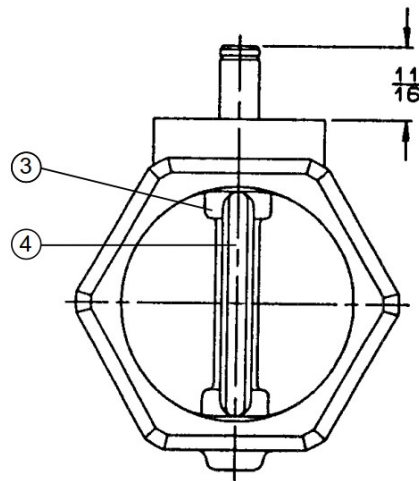
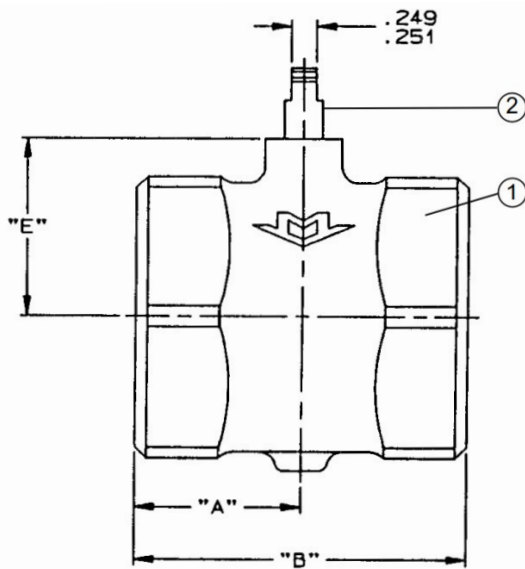
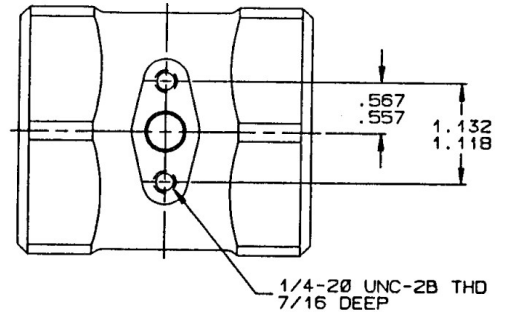
Bronze Butterball® Butterfly Valve
175 psig WOG
Threaded Ends
Bare Stem Valve Only

MATERIALS LIST

ITEM	PART	MATERIALS	ASTM SPEC.
1	BODY	BRONZE	ASTM B584 C84400
2	STEM	STAINLESS STEEL	TYPE 303
3	DISC	STAINLESS STEEL	TYPE 304
4	DISC SEAL	VITON	
5	O-RING (NOT SHOWN)	BUNA-N	

NOTES:

- (1) DO NOT USE IN HOT WATER ABOVE 120°F.
- (2) CONTACT FACTORY FOR ACTUATION.



DIMENSIONS

	VALVE SIZE	1"	1 1/4"	1 1/2"	2"
		DN 25	DN 32	DN 40	DN 50
A	INCHES	1.06	1.31	1.44	1.63
	MM	27	33	37	41
B	INCHES	2.13	2.63	2.88	3.25
	MM	54	67	73	83
E	INCHES	1.28	1.44	1.56	1.75
	MM	33	37	40	44
C _v		43	85	112	180
TORQUE	IN-LB	35	50	70	120

The information presented on this sheet is correct at time of publication. Milwaukee Valve reserves the right to change design and/or materials without notice. For our Installation, Operation and Maintenance Manual and the most current product information go to www.milwaukeevalve.com.
 ⚠ State of California Prop 65 **WARNING:** Cancer and Reproductive Harm. For more information visit www.p65warnings.ca.gov.

