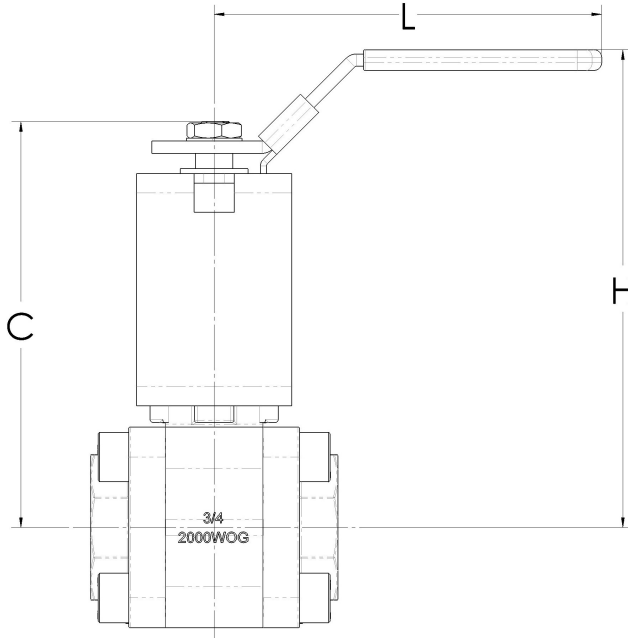
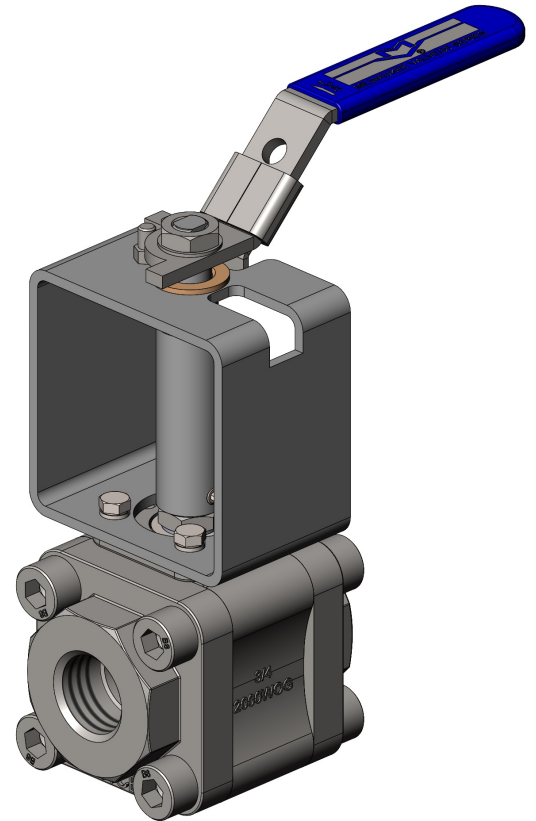


35 Series with 3" Locking Extension Handle (LXH)

Features & Dimensions

Details:

- 3" extension for use in insulated pipe or avoiding a nearby obstruction
- Locking handle for safety lockout
- Carbon Steel bracket with optional 300 series SS
- Available fully assembled or as a kit for easy field installation



Full Port

	UNITS	1/2"	3/4"	1"	1-1/4"	1-1/2"	2"
C	inches	4.98	5.23	5.58	6.23	6.51	7.34
	mm	126	133	142	158	165	186
H	inches	5.62	6.18	6.35	6.77	7.00	8.44
	mm	143	157	161	172	178	214
L	inches	4.21	5.00	6.02	7.80	7.80	11.54
	mm	107	127	153	198	198	293
Kit Part Number: 8670MF35_EL300		D	E	F	H	H	J

Reduced Port

	UNITS	1/4"	3/8"	1/2"	3/4"	1"	1-1/4"	1-1/2"	2"
C	inches	4.83	4.83	4.98	4.93	5.25	5.58	6.23	6.51
	mm	123	123	126	125	133	142	158	165
H	inches	5.45	5.45	5.59	5.59	6.14	6.31	6.71	6.97
	mm	138	138	142	142	156	160	170	177
L	inches	4.21	4.21	4.21	4.21	5.00	6.02	7.80	7.80
	mm	107	107	107	107	127	153	198	198
Kit Part Number: 8670MF35_EL300		D	D	D	D	E	F	H	H

Note: 1/4", 3/8", and 1/2" are full port.

The information presented on this sheet is correct at time of publication. Milwaukee Valve reserves the right to change design and/or materials without notice. For our Installation, Operation and Maintenance Manual and the most current product information go to www.milwaukeevalve.com.

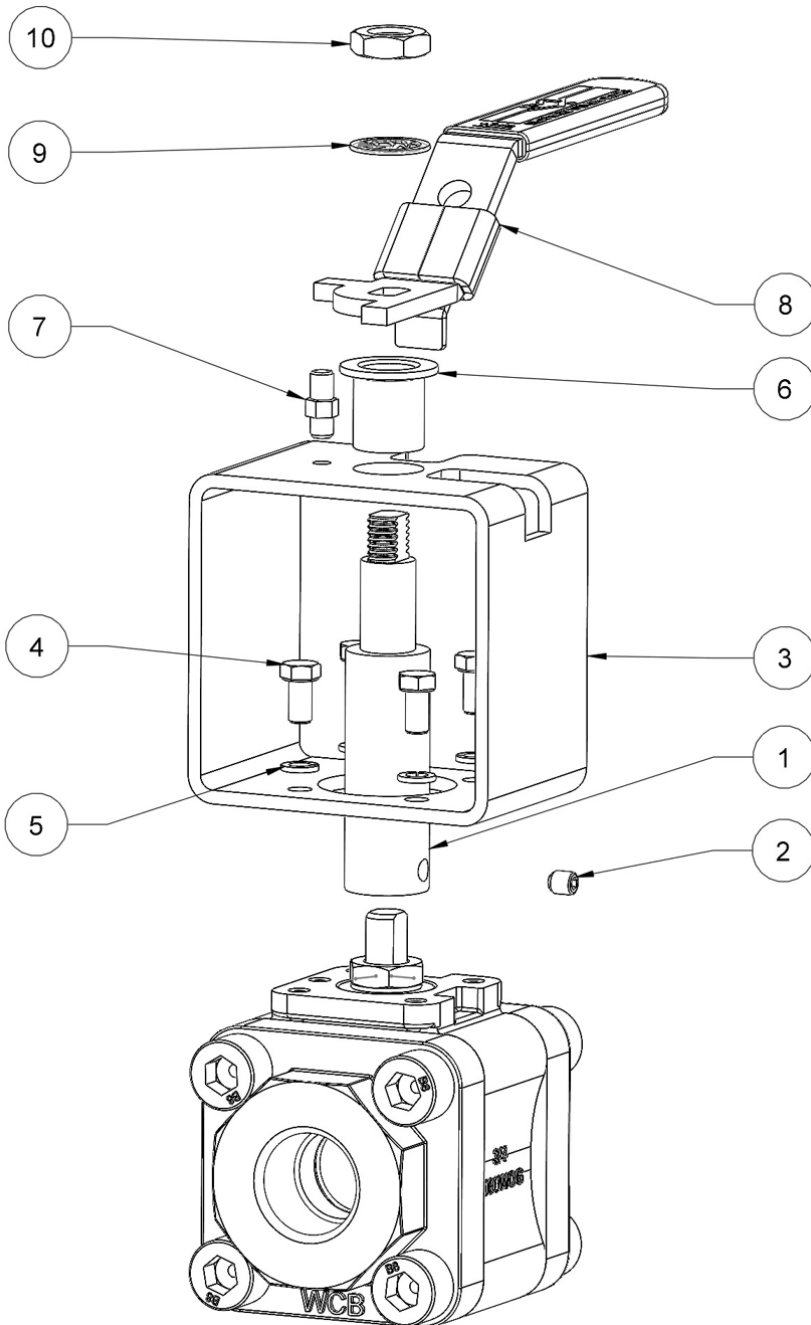
⚠ State of California Prop 65 **WARNING:** Cancer and Reproductive Harm. For more information visit www.p65warnings.ca.gov.

MILWAUKEE VALVE



35 Series with 3" Locking Extension Handle (LXH)

Field Installation Instructions



Kit Includes:

Qty	Description
1	CS Extension Bracket (SS optional)
1	SS Stem Extension Sleeve
1	Bronze Flange Bushing
4	SS Hex Head Cap Screws
4	SS Split Lock Washers

1. Remove existing Handle Nut (10), Lock Washer (9), and Locking Handle (8) from valve stem. Also remove existing Travel Stop (7).

2. Slide Stem Extension Sleeve (1) onto valve stem and tighten the provided Setscrew (2).

3. Place Extension Bracket (3) over valve stem.

4. Place the Bronze Flange Bushing (6) over the top of the stem so the flange is flush on the Bracket.

5. Secure Bracket to valve mounting pad by tightening x4 Hex Head Cap Screws (4) and x4 Lock Washers (5).

6. Re-install Locking Handle (8), Lock Washer (9), and Handle Nut (10) onto Stem Extension. Re-install Travel Stop (7) into top threaded hole.

Contact the factory with any additional questions.

The information presented on this sheet is correct at time of publication. Milwaukee Valve reserves the right to change design and/or materials without notice. For our Installation, Operation and Maintenance Manual and the most current product information go to www.milwaukeevalve.com.

⚠ State of California Prop 65 **WARNING:** Cancer and Reproductive Harm. For more information visit www.p65warnings.ca.gov.

MILWAUKEE VALVE

