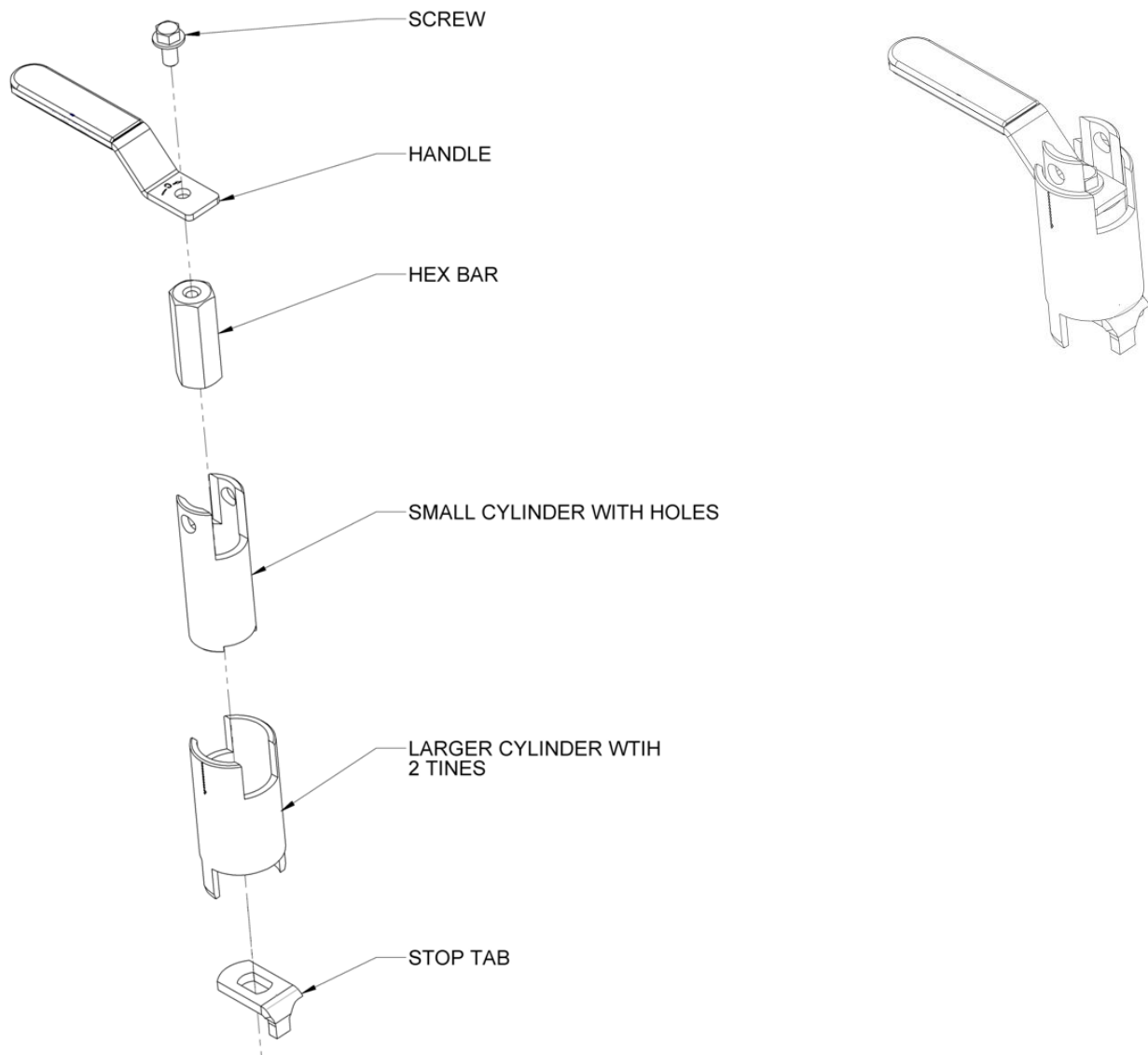


# Locking Extension for Bronze Ball Valves



1. Remove handle and replace with small stop tab.
2. Attach hex bar by threading it onto the valve stem.
3. Slide on the smaller cylinder that has the 2 holes for the lock.
4. Slide larger cylinder with long skinny tines facing down towards the valve.
5. Attach handle and tighten down with screw that is provided.