

# 1800 2 1/2" - 42"

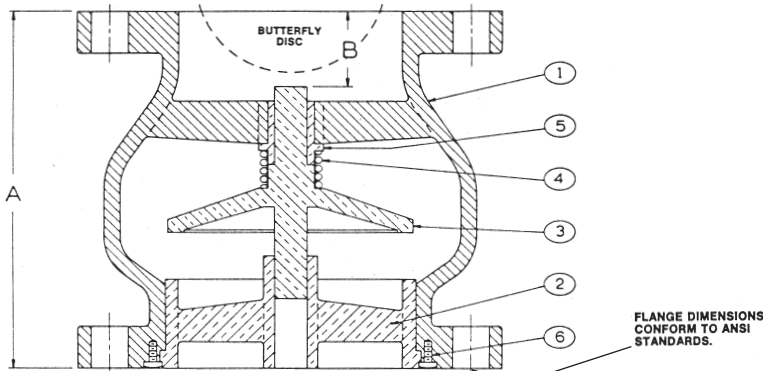
## Iron Globe Style Silent Check Valve

200 psi (125#), 400 psi (250#)†

Stainless Steel Trim

Conforms to: MSS SP-125

Third Party Certified NSF/ANSI 372-2016



MATERIAL LIST		
No.	PART	MATERIAL
1	Body	Cast Iron, ASTM A126
2	Seat	St. Steel, TYPE 304
3	Disc	St. Steel, TYPE 304
4	Spring	St. Steel, TYPE 304
5	Bushing	St. Steel, TYPE 304
6	Screw	St. Steel, TYPE 304

Note 1: Valve sizes 2 1/2" through 10" will mate up to wafer style butterfly valve without the use of spool pieces or other adaptors. (See "B" dimension for allowable clearance).

Note 2: The wetted surface of this product contacted by consumable water contains less than one quarter of one percent (.25%) of lead by weight.

Note 3: Valve is designed for liquid service only. Install minimum 4 to 5 pipe diameters downstream from pump discharge or elbows to avoid flow turbulence. Valve is designed to be mated to flat faced steel flanges.

1800 Series (125#)					1850/1860 Series (250#)			
Units	Size	A	B	C <sub>v</sub>	Units	Size	A	B
Inches	2 1/2	5.50	1.19	110	Inches	2 1/2	5.50	1.44
mm		140	30		mm		140	37
Inches	3	6.00	1.38	155	Inches	3	6.00	1.38
mm		152	35		mm		152	35
Inches	4	7.25	1.75	278	Inches	4	7.25	1.75
mm		184	44		mm		184	44
Inches	5	8.50	2.00	435	Inches	5	8.50	2.00
mm		216	51		mm		216	51
Inches	6	9.75	2.50	625	Inches	6	9.75	2.50
mm		248	64		mm		248	64
Inches	8	12.50	3.25	1115	Inches	8	12.50	3.25
mm		318	83		mm		318	83
Inches	10	15.50	4.25	1770	Inches	10	15.50	4.25
mm		394	108		mm		394	108
Inches	12	14.25	N/A	2500	Inches	12	14.25	N/A
mm		362	N/A		mm		362	N/A
Inches	14	15.75	N/A	3400	Inches	14	15.75	N/A
mm		400	N/A		mm		400	N/A
Inches	16	17.63	N/A	4400	Inches	16	17.63	N/A
mm		448	N/A		mm		448	N/A
Inches	18	18.75	N/A	5600	Inches	18	18.75	N/A
mm		476	N/A		mm		476	N/A
Inches	20	20.63	N/A	6900	Inches	20	20.63	N/A
mm		524	N/A		mm		524	N/A
Inches	24	24.00	N/A	10000	Inches	24	24.00	N/A
mm		610	N/A		mm		610	N/A
Inches	30	29.25	N/A	15400	Inches	30	29.25	N/A
mm		743	N/A		mm		743	N/A
Inches	36	45.00	N/A	22400	Inches	36	45.00	N/A
mm		1143	N/A		mm		1143	N/A
Inches	42	50.00	N/A	30400	Inches	42	50.00	N/A
mm		1270	N/A		mm		1270	N/A

† Max Non-Shock Working PSI 125# ANSI B16.1 Flange Rating		
	Temperature	
Size	150° F	200° F
2 1/2" - 12"	200 PSI	190 PSI
14" - 42"	150 PSI	135 PSI

† Max Non-Shock Working PSI 250# ANSI B16.1 Flange Rating		
	Temperature	
Size	150° F	200° F
2 1/2" - 12"	400 PSI	370 PSI
14" - 42"	300 PSI	280 PSI

**INNOVATION** IN EVERY VALVE

The information presented on this sheet is correct at time of publication. Milwaukee Valve reserves the right to change design and/or materials without notice. For our Installation, Operation and Maintenance Manual and the most current product information go to [www.milwaukeevalve.com](http://www.milwaukeevalve.com). <sup>Δ</sup> State of California Prop 65  
**WARNING:** Cancer and Reproductive Harm. For more information visit [www.p65warnings.ca.gov](http://www.p65warnings.ca.gov).

**MILWAUKEE VALVE**