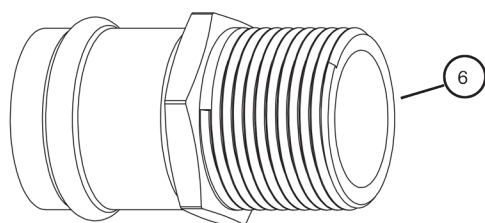
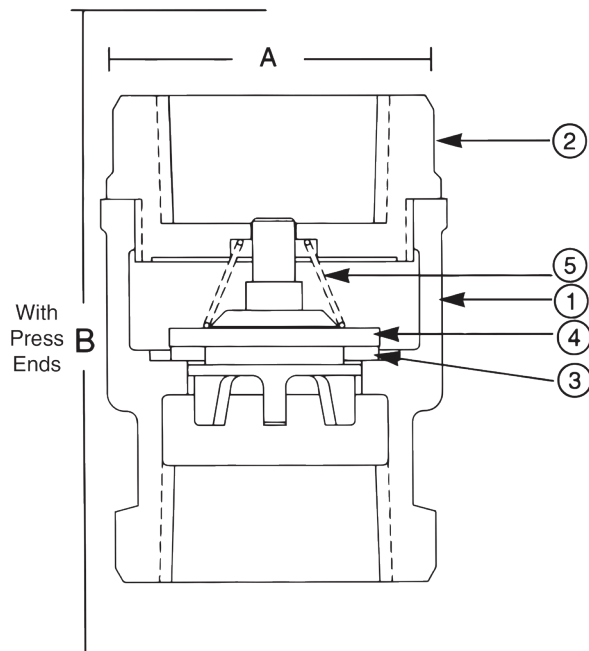


# 548B/548T P2 1/2"-2"

**ULTRA PRESS**®

**Bronze Lift Check Valve**  
**200 psig @ 250°F†**  
**Spring Loaded • Press Ends**  
**Buna (B) or TFE (T)**



Press End Adapter (4151 Series)

MATERIAL LIST			
No.	PART	MATERIAL	SPECIFICATION
1	Body	Cast Bronze	ASTM B584, C84400
2	Tail Piece	Cast Bronze	ASTM B584, C84400
3	Disc	TFE 548T	Commercial
		Buna (B)/TFE(T)	Commercial
4	Disc Holder	Cast Bronze	ASTM B584, C85700
5	Spring	Bronze	ASTM B103, C52100
6	Press Adapter	Brass Fitting w/ EPDM O-Ring	ASTM C27450

DIMENSIONS - INCHES/MILLIMETERS					
Units	Size	A	B	Weight	Cv
Inches mm	1/2	0.87 22	2.09 53.20	0.44	4.1
Inches mm	3/4	0.98 25	2.31 59.00	0.57	7.6
Inches mm	1	0.98 25	2.66 68.00	0.89	13
Inches mm	1 1/4	1.02 26	3.09 79.00	1.28	23
Inches mm	1 1/2	1.42 36	3.31 84.00	1.72	31
Inches mm	2	1.58 40	3.78 96.00	2.58	54

† Non-Shock

**Do not use for reciprocating air compressor service.**

**Note 1:** Not intended for use in potable water.

**Note 2:** Check Valves may be installed in both the horizontal and vertical lines with upward flow or in any intermediate position.

**INNOVATION** IN EVERY VALVE

The information presented on this sheet is correct at time of publication. Milwaukee Valve reserves the right to change design and/or materials without notice. For our Installation, Operation and Maintenance Manual and the most current product information go to [www.milwaukeevalve.com](http://www.milwaukeevalve.com). ⚠ State of California Prop 65  
**WARNING:** Cancer and Reproductive Harm. For more information visit [www.p65warnings.ca.gov](http://www.p65warnings.ca.gov).

**MILWAUKEE VALVE**