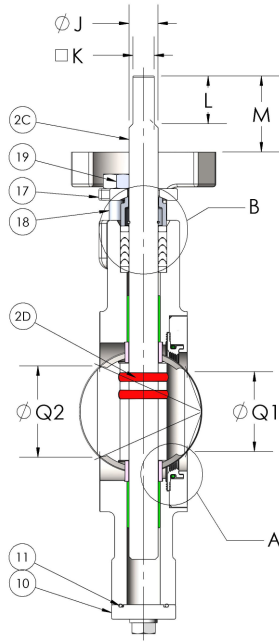
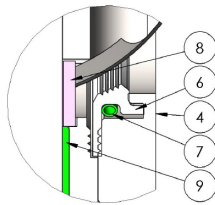


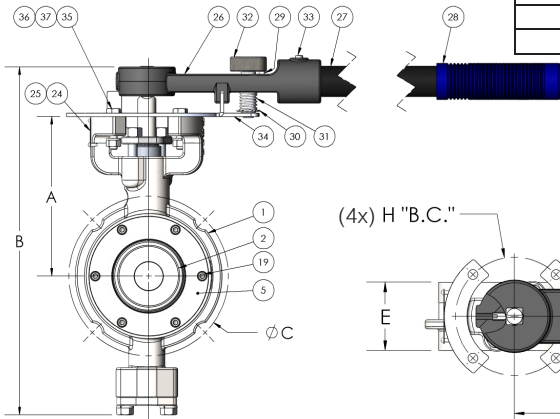
HP Series Wafer 3" - 8" with Lever



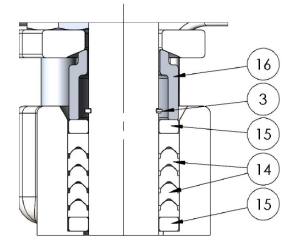
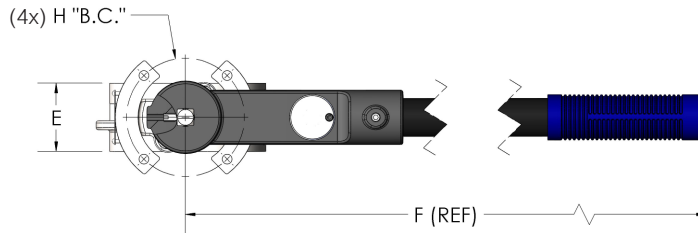
VALVE SHOWN OPEN



DETAIL A



3" 150 / 200
WAFFER SHOWN



DETAIL B

3" - 8" 150/300 LB Wafer With Handle			
ITEM No.	PARTS NAME	MATERIAL	SPECIFICATION
1	150 WAFFER BODY	A. CARBON STEEL	ASTM A216 GR. WCB
		B. STAINLESS STEEL	ASTM A351 GR. CF8M
2	MACHINED DISC	STAINLESS STEEL	ASTM A351 GR. CF8M
3	STEM	STAINLESS STEEL	17-4 PH COND. H1150
4	TAPER PIN	18-8 STAINLESS STEEL	COMMERCIAL
5	SEAT RETAINER RING	A. CARBON STEEL	ASTM A515 GR. 70
		B. STAINLESS STEEL	ASTM A240 TY.316
6	SEAT	A. PTFE COMMERCIAL	COMMERCIAL
		B. 15% GLASS FILLED TEFLON	COMMERCIAL
		C. UHMWPE	COMMERCIAL
7	BOTTOM CAP	STAINLESS STEEL	ASTM A351 GR. CF8M
8	STEM RETAINER	304 STAINLESS STEEL	COMMERCIAL
9	GLAND FOLLOWER	STAINLESS STEEL	ASTM A351 GR. CF8M
10	GLAND RETAINER	STAINLESS STEEL	ASTM A351 GR. CF8M
11	DISC SPACER	316 STAINLESS STEEL	COMMERCIAL
12	MALE ADAPTER	PTFE	COMMERCIAL
13	V-RING	PTFE	COMMERCIAL
14	FEMALE ADAPTER	PTFE	COMMERCIAL
15	PACKING WASHER	304 STAINLESS STEEL	COMMERCIAL
16	O-RING	VITON	COMMERCIAL
17	BEARING	STAINLESS STEEL - PTFE LINED	COMMERCIAL
18	SEAT SPRING	STAINLESS STEEL	COMMERCIAL
19	SOCKET HEAD CAP SCREW	STAINLESS STEEL	ASTM A193 GR B8M
20	WASHER, SPLIT	STAINLESS STEEL	COMMERCIAL
21	HEX HEAD CAP SCREW	STAINLESS STEEL	ASTM 193 GR. B8M
22	STUD	STAINLESS STEEL	ASTM A193 GR. B8M
23	HEAVY HEX NUT	STAINLESS STEEL	ASTM A194 GR. 8M
24	HPBV NAMEPLATE MILWAUKEE	ALUMINUM	COMMERCIAL
25	DRIVE SCREW, TY. U, #2x.25	STAINLESS STEEL, TY. 18-8	COMMERCIAL
26	4" HANDLE	DUCTILE IRON	COMMERCIAL
27	HANDLE PIPE	CARBON STEEL	COMMERCIAL
28	GRIP	VINYL	COMMERCIAL
29	ROLL PIN	STAINLESS STEEL	COMMERCIAL
30	E-CLIP	STAINLESS STEEL	COMMERCIAL
31	SPRING	STAINLESS STEEL	COMMERCIAL
32	LOCK KNOB	STAINLESS STEEL	COMMERCIAL
33	SOCKET SET SCREW	STAINLESS STEEL	COMMERCIAL
34	NOTCH PLATE	STAINLESS STEEL	COMMERCIAL
35	HEX HEAD CAP SCREW	CARBON STEEL - ZINC PLATED	COMMERCIAL
36	STD. HEX NUT	STAINLESS STEEL	COMMERCIAL
37	1/4" LOCKWASHER	STAINLESS STEEL	COMMERCIAL

3" - 6" 150/300LB & 8" 150LB WAFFER WITH LEVER															
VALVE SIZE	VALVE DIMENSIONS					TOP WORKS		STEM CONNECTION					CORE DIMS		Bolt ϕ
	"A" HEIGHT	"B" HEIGHT	"C" B.C.	"E" FACE	"F"	"H" B.C.	"J" ϕ STEM	"K" SQUARE	"L" LENGTH	"L2"	"M" LENGTH	"N"	ϕ Q1	ϕ Q2	
3" 150/300 WAFFER	5.59	11.24	6.00	1.88	16.87	3.25	0.62	0.46	1.02	N/A	1.72	N/A	2.28	2.47	0.27
4" 150/300 WAFFER	6.25	12.77	7.50	2.13	16.87	3.25	0.62	0.46	1.02	N/A	1.56	N/A	3.06	3.53	0.27
5" 150 WAFFER	7.69	15.65	8.50	2.13	19.87	4.25	0.87	0.64	1.04	N/A	1.69	N/A	4.35	4.47	0.44
5" 300 WAFFER	7.69	15.65	9.25	2.13	19.87	4.25	0.87	0.64	1.04	N/A	1.69	N/A	4.35	4.47	0.44
6" 150 WAFFER	7.69	15.51	9.50	2.25	19.87	4.25	0.87	0.64	1.04	N/A	1.69	N/A	5.33	5.43	0.44
6" 300 WAFFER	7.69	15.32	9.50	2.25	19.87	4.25	0.87	0.64	1.04	N/A	1.69	N/A	5.33	5.43	0.44
8" 150 WAFFER	9.51	19.27	11.75	2.63	22.85	4.75	1.12	N/A	N/A	1.50	1.86	0.25	7.10	7.37	0.56

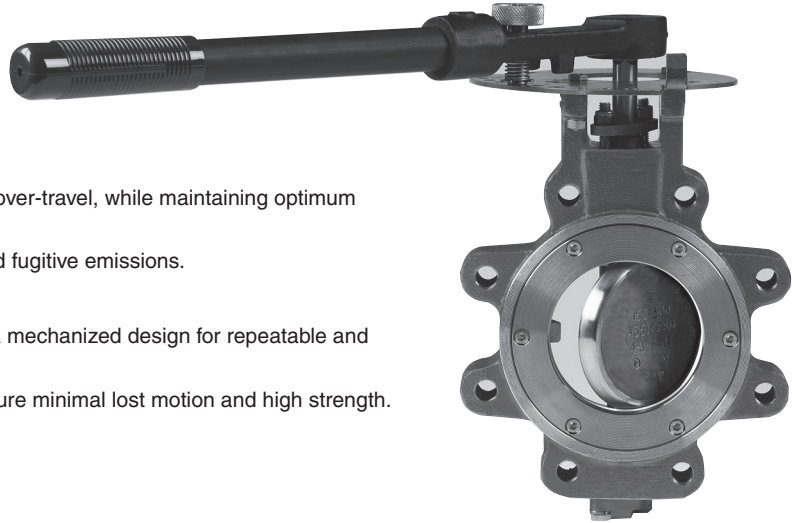
The information presented on this sheet is correct at time of publication. Milwaukee Valve reserves the right to change design and/or materials without notice. For our Installation, Operation and Maintenance Manual and the most current product information go to www.milwaukeevalve.com.
 ⚠️ State of California Prop 65 **WARNING:** Cancer and Reproductive Harm. For more information visit www.p65warnings.ca.gov.



HP Series: Milwaukee Valve Company High Performance Butterfly Valves

Features and Benefits

- All valves offer bi-directional bubble-tight sealing at full rated pressure, with lug-bodied valves providing bi-directional dead-end service at full rated pressure.
- The double-offset design provides superior sealing with minimal seat contact and wear.
- The shaft and disc are manufactured as a single piece for maximum strength and Cv.
- The position stop on the disc is internally cast to prevent over-travel, while maintaining optimum disc/seat contact.
- The adjustable stem packing eliminates stem leakage and fugitive emissions.
- The blow-out-proof stem prevents injury and product loss.
- The seat is energized by a combination of pressure and a mechanized design for repeatable and reliable sealing and extended cycle life.
- The stem/disc connection uses a welded taper pin to ensure minimal lost motion and high strength.



H.P. Lug Pattern

Product Range

Sizes: 2-1/2" - 48" Class 150
 Sizes: 2-1/2" - 24" Class 300
 Body Configuration: Lug or Wafer

Operators Available

10 Position Lever Handle, Gear Operators, Pneumatic and Electric Actuators

Material of Standard Construction

Body Carbon Steel or CF8M 316 Stainless Steel
 Disc CF8M 316 Stainless Steel
 Stem 17-4 PH Stainless Steel
 Bearing Stainless backed RTFE
 Seat RTFE/Stainless Garter Spring

Specifications

Valve Sizes 2-1/2" through 24"
 Flanged Ends Connections per ASME/ANSI B16.5 or B16.47 Series A (sizes 30" - 48").

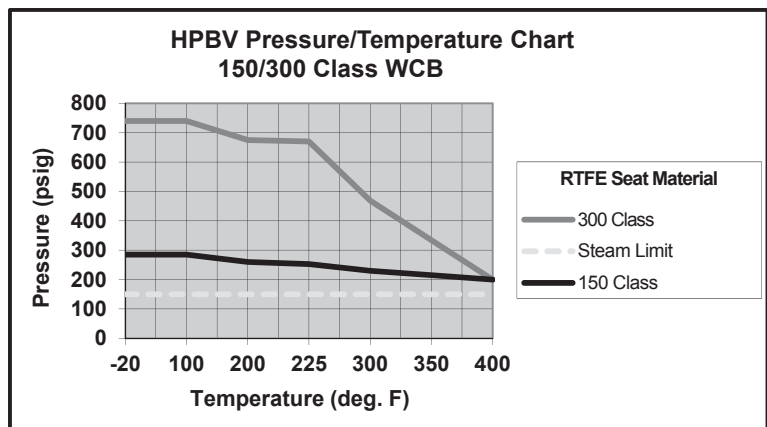
Valve face to face dimension per MSS-SP-68.

Valve bodies are cast high quality steel, with standard availability in ASTM-A216 WCB CS and ASTM A-351 CF8M SS. Body wall thickness meets ASME/ANSI B16.34 and complies with quality standard for steel castings MSS-SP-55.

High performance valve meets the requirements of MSS-SP-68 for double offset design.

Valve pressure tests meet MSS-SP-61.
 Valve testing and inspection meet API 598.

Tagging meets the requirements of MSS-SP-25 and API 609B.



Pressure Ratings*

(Cold Working Pressure)

	2-1/2" through 48" Class 150	2-1/2" through 24" Class 300
Carbon Steel	285 psi	740 psi
Stainless Steel	275 psi	720 psi

*Valve is rated @ 150 PSI steam for on & off application and 50 PSI modulating service. (Limit Range 30°-70° - No Dwell In Near Closed Position.)

HOW TO ORDER MILWAUKEE VALVES HP SERIES HIGH PERFORMANCE BUTTERFLY VALVE

SERIES	ANSI CLASS	BODY STYLE	BODY MATERIAL	DISC MATERIAL	STEM MATERIAL	SEAT MATERIAL	STEM PACKING	OPERATOR	EXT. OPTIONS	SIZE
XX	X	X	X	X	X	X	X	X	XX	XXX
HP	1-150 3-300	L-LUG W-WAFER	C-WCB S-CF8M	S-CF8M	4-17-4 SS 5-316 SS	1-PTFE 2-RPTFE 4-UHMWPE	1-PTFE G-GRAPHITE	1-BARE STEM 2-LEVER-LOCK 3-GEAR OP	S-Stainless Steel Seat Retainer U-Assembled in USA	025-240

PART NUMBER EXAMPLE

HP1LCS4111 040 = 4 INCH, HIGH PERFORMANCE, CLASS 150, LUG PATTERN, CARBON STEEL BODY, 17-4 STEM, PTFE SEAT, PTFE PACKING, BARE STEM WITH NO EXT OPTIONS

The information presented on this sheet is correct at time of publication. Milwaukee Valve reserves the right to change design and/or materials without notice. For our Installation, Operation and Maintenance Manual and the most current product information go to www.milwaukeevalve.com.

⚠ State of California Prop 65 **WARNING:** Cancer and Reproductive Harm. For more information visit www.p65warnings.ca.gov.

