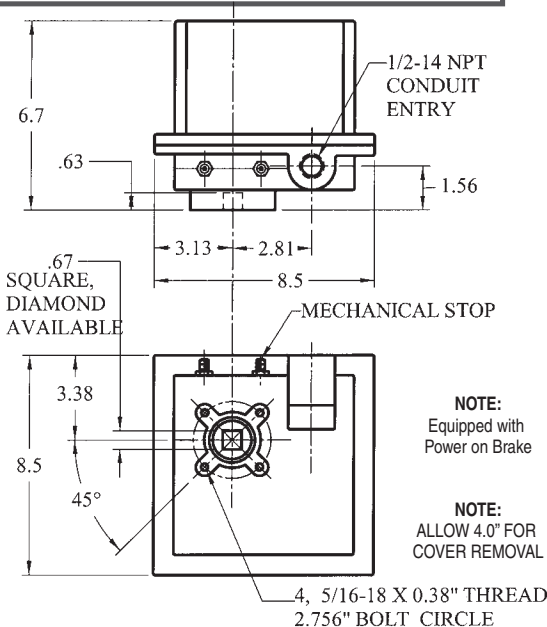


MCSRE200



SPECIFICATIONS:

Output Torque	200 Lb.-In.
Cycle Time.....Power Stroke.....	10 Sec/90° Rotation
Spring Stroke.....	3 Sec/90° Rotation
Duty Cycle.....	25%
Motor.....	115 Vac, 60 Hz, 1 Ph. PSC Or 220 Vac, 60 Hz, 1Ph.
Thermal Over-Load Protection.....	Std.
Enclosure	NEMA 4
Enclosure Option.....	NEMA 7
Enclosure Material.....	Cast Aluminum
Enclosure Coating.....	Thermally Bonded Polyester Powder
Fasteners.....	S.S.
Output Shaft.....	S.S.
Terminal Strip Connection.....	AWG 14
Lock Rotor Current.....	.75 Amps
Weight.....	13 Lbs.
Lubrication.....	Permanent
Mounting.....	ISO 5211 F07
Installation.....	Universal
Temperature.....	0° F. to +150° F.
Heater Required at 32° F. and Below	
Switches: 15 A 1/2 HP 125, 250 Vac 0.5 A, 125 Vdc	



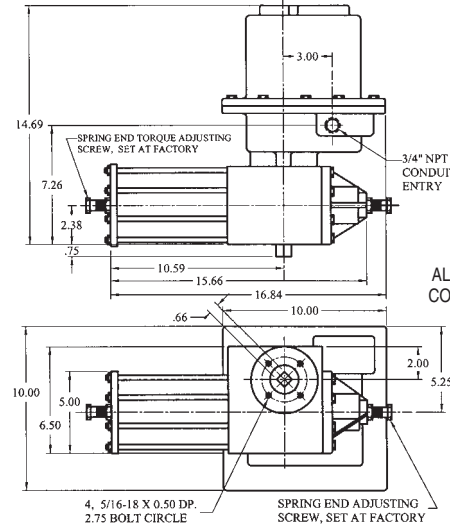
All units are supplied with two limit switches for electrically controlling open and close positions; a mechanical stop is set at the factory for positioning the designated fail position. The designated fail position is available in both open (CCW rotation) or close (CW rotation) position. Spring return actuators are not intended to be used in control applications.

MCSRE400 MCSRE600

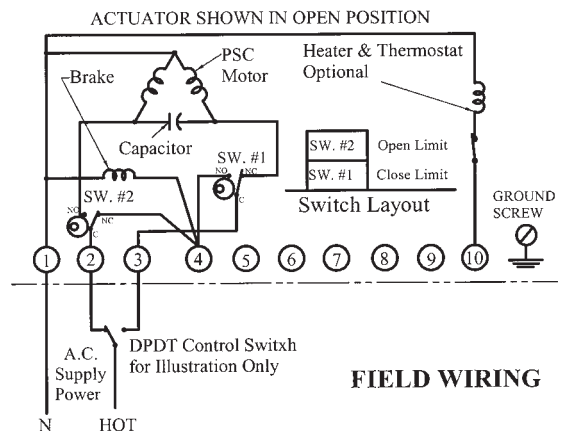


SPECIFICATIONS:

Torque (Lb.-In.)	Spring Start	600	800
	Spring End	400	600
	Power Stroke	400	600
Cycle Time Sec./90° Rotation	Power Stroke	12 Sec	12 Sec
	Spring Start	3 Sec	3 Sec
Lock Rotor Current		2.0 Amp	2.0 Amp



Electric Spring Return Wiring Diagram:



NOTES:
Power to 1 & 2 opens the valve (CCW Rotation)
Power to 1 & 3 closes the valve (CW Rotation)

Loss of power causes actuator to drive to the fail position. With the return of power the actuator will travel to the position designated by the control switch.

DO NOT power actuator into mechanical stops, OUTPUT PINION WILL BE DAMAGED.

