



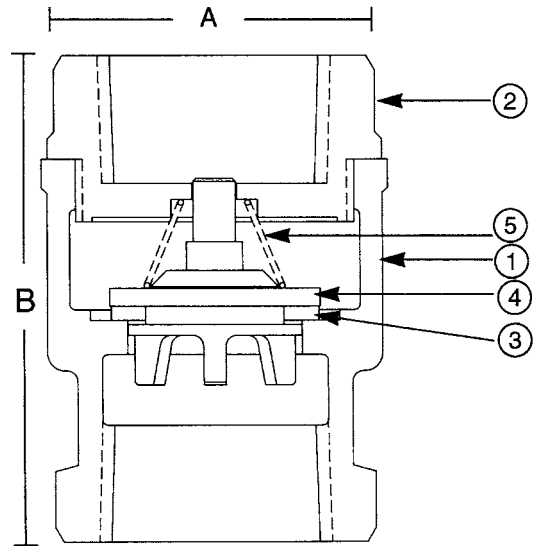
Bronze Lift Check Valve For Potable Water
250 psig WOG †
PTFE Disc
Spring Loaded • Threaded Ends

UP548T 3/8"-2"



MATERIALS LIST

| ITEM | PART | MATERIALS | ASTM SPEC. |
|------|-------------|-----------------|-------------|
| 1 | Body | Cast Bronze | B584 C89833 |
| 2 | Tail Piece | Cast Bronze | B584 C89833 |
| 3 | Disc | PTFE | Commercial |
| 4 | Disc Holder | Cast Bronze | B584 C89833 |
| 5 | Spring | Stainless Steel | A276 S30400 |



Note: Check Valves may be installed in both the horizontal and vertical lines with upward flow or in any intermediate position.

DIMENSIONS

| Units | Size | A | B | Cv |
|--------|-------|------|------|------|
| INCHES | 3/8 | 1.22 | 1.97 | 2.5 |
| mm | | 31 | 50 | |
| INCHES | 1/2 | 1.22 | 2.09 | 4.1 |
| mm | | 31 | 53 | |
| INCHES | 3/4 | 1.50 | 2.31 | 7.6 |
| mm | | 38 | 59 | |
| INCHES | 1 | 1.91 | 2.66 | 13.0 |
| mm | | 48 | 67 | |
| INCHES | 1 1/4 | 2.16 | 3.09 | 23.0 |
| mm | | 55 | 79 | |
| INCHES | 1 1/2 | 2.59 | 3.31 | 31.0 |
| mm | | 66 | 84 | |
| INCHES | 2 | 3.13 | 3.78 | 54.0 |
| mm | | 79 | 96 | |

† Non-Shock

Note: Lead free refers to the wetted surface of the pipe, fittings and fixtures in potable water systems that have a weighted average lead content ≤0.25%. Source: California Health and Safety Code (116875).

The information presented on this sheet is correct at time of publication. Milwaukee Valve reserves the right to change design and/or materials without notice. For our Installation, Operation and Maintenance Manual and the most current product information go to www.milwaukeevalve.com.
 ⚠ State of California Prop 65 **WARNING:** Cancer and Reproductive Harm. For more information visit www.p65warnings.ca.gov.

