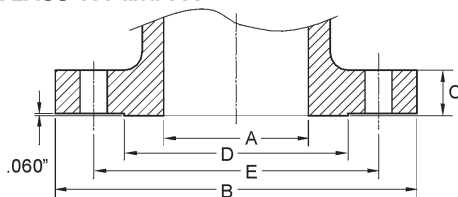
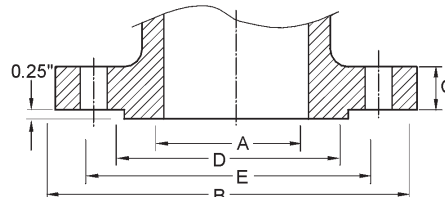


FLANGE DIMENSIONS

CLASS 150 and 300



CLASS 600



DIMENSIONS

Class	Nominal Pipe Size	A	B	C	D	E	Stud Bolts	
							No.	Dia.
Class 150	2 in.	2.00	6.00	0.75	3.62	4.75	4	5/8
	2 1/2 in.	2.50	7.00	0.88	4.12	5.50	4	5/8
	3 in.	3.00	7.50	0.94	5.00	6.00	4	5/8
	4 in.	4.00	9.00	0.94	6.19	7.50	8	5/8
	5 in.	5.00	10.00	0.94	7.31	8.50	8	3/4
	6 in.	6.00	11.00	1.00	8.50	9.50	8	3/4
	8 in.	8.00	13.50	1.12	10.62	11.75	8	3/4
	10 in.	10.00	16.00	1.19	12.75	14.25	12	7/8
	12 in.	12.00	19.00	1.25	15.00	17.00	12	7/8
	14 in.	13.25	21.00	1.38	16.25	18.75	12	1
	16 in.	15.25	23.50	1.44	18.50	21.25	16	1
	18 in.	17.25	25.00	1.56	21.00	22.75	16	1 1/8
	20 in.	19.25	27.50	1.69	23.00	25.00	20	1 1/8
24 in.	23.25	32.00	1.88	27.25	29.50	20	1 1/4	
30 in.	29.25	38.75	2.94	33.75	36.00	28	1 1/4	
36 in.	35.00	46.00	3.58	40.25	42.75	32	1 1/2	

Class	Nominal Pipe Size	A	B	C	D	E	Stud Bolts	
							No.	Dia.
Class 300	2 in.	2.00	6.50	0.88	3.62	5.00	8	5/8
	2 1/2 in.	2.50	7.50	1.00	4.12	5.88	8	3/4
	3 in.	3.00	8.25	1.12	5.00	6.62	8	3/4
	4 in.	4.00	10.00	1.25	6.19	7.88	6	3/4
	5 in.	5.00	11.00	1.38	7.31	9.25	8	3/4
	6 in.	6.00	12.50	1.44	8.50	10.62	12	3/4
	8 in.	8.00	15.00	1.62	10.62	13.00	12	7/8
	10 in.	10.00	17.50	1.88	12.75	15.25	16	1
	12 in.	12.00	20.50	2.00	15.00	17.75	16	1 1/8
	14 in.	13.25	23.00	2.12	16.25	20.25	20	1 1/8
	16 in.	15.25	25.50	2.25	18.50	22.50	20	1 1/4
	18 in.	17.00	28.00	2.38	21.00	24.75	24	1 1/4
	20 in.	19.00	30.50	2.50	23.00	27.00	24	1 1/4
24 in.	23.00	36.00	2.75	27.25	32.00	24	1 1/2	
30 in.	29.00	43.00	3.62	33.75	39.25	28	1 3/4	
36 in.	34.50	50.00	4.12	40.25	46.00	32	2	

Class	Nominal Pipe Size	A	B	C	D	E	Stud Bolts	
							No.	Dia.
Class 600	2 in.	2.00	6.50	1.00	3.82	5.00	8	5/8
	2.5 in.	2.50	7.50	1.12	4.12	5.88	8	3/4
	3 in.	3.00	8.25	1.25	5.00	6.62	8	3/4
	4 in.	4.00	10.75	1.50	6.19	8.50	8	7/8
	5 in.	5.00	13.00	1.75	7.31	10.50	8	1
	6 in.	6.00	14.00	1.88	8.50	11.50	12	1
	8 in.	7.88	16.50	2.19	10.62	13.75	12	1 1/8
	10 in.	9.75	20.00	2.50	12.78	17.00	16	1 1/4
	12 in.	11.75	22.00	2.62	15.00	19.25	20	1 1/4
	14 in.	12.88	23.75	2.75	16.25	20.75	20	1 3/8
	16 in.	14.75	27.00	3.00	18.50	23.75	20	1 1/2
	18 in.	16.50	29.25	3.25	21.00	25.75	20	1 5/8
	20 in.	18.25	32.00	3.50	23.00	28.50	24	1 5/8
24 in.	22.00	37.00	4.00	27.25	33.00	24	1 7/8	
30 in.	27.37	44.50	4.50	33.75	40.25	28	2	
36 in.	32.87	51.75	4.88	40.25	47.00	28	2 1/2	

Class	Nominal Pipe Size	A	B	C	D	E	Stud Bolts	
							No.	Dia.
Class 900	3 in.	2.88	9.50	1.50	5.00	7.50	8	7/8
	4 in.	3.88	11.50	1.75	6.19	9.25	8	1 1/8
	5 in.	4.75	13.75	2.00	7.31	11.00	8	1 1/4
	6 in.	5.75	15.00	2.19	8.50	12.50	12	1 1/8
	8 in.	7.50	18.50	2.50	10.62	15.50	12	1 3/8
	10 in.	9.38	21.50	2.75	12.75	18.50	16	1 3/8
	12 in.	11.12	24.00	3.12	15.00	21.00	20	1 3/8
	14 in.	12.25	25.25	3.38	16.25	22.00	20	1 1/2
	16 in.	14.00	27.75	3.50	18.50	24.25	20	1 5/8
	18 in.	15.75	31.00	4.00	21.00	27.00	20	1 7/8
20 in.	17.50	33.75	4.25	23.00	29.50	20	2	
24 in.	21.00	41.00	5.50	27.25	35.50	20	2 1/2	

Class	Nominal Pipe Size	A	B	C	D	E	Stud Bolts	
							No.	Dia.
Class 1500	2 in.	1.88	8.50	1.50	3.82	6.50	6	7/8
	2 1/2 in.	2.25	9.82	1.82	4.12	7.50	8	1
	3 in.	2.75	10.50	1.88	5.00	8.00	8	1 1/8
	4 in.	3.62	12.25	2.12	6.19	9.50	8	1 1/4
	5 in.	4.38	14.75	2.88	7.31	11.50	8	1 1/2
	6 in.	5.38	15.50	3.25	8.50	12.50	12	1 3/8
	8 in.	7.00	19.00	3.62	10.82	15.50	12	1 5/8
	10 in.	8.75	23.00	4.25	12.75	19.00	12	1 7/8
	12 in.	10.38	26.50	4.88	15.00	22.50	16	2
	14 in.	11.38	29.50	5.25	16.25	25.00	16	2 1/4
	16 in.	13.00	32.50	5.75	18.50	27.75	16	2 1/2
18 in.	14.82	36.00	6.38	21.00	30.50	16	2 3/4	
20 in.	18.38	38.75	7.00	23.00	32.75	16	3	
24 in.	19.62	46.00	8.00	27.25	39.00	16	3 1/2	

Class	Nominal Pipe Size	A	B	C	D	E	Stud Bolts	
							No.	Dia.
Class 2500	2 in.	1.50	9.25	2.00	3.62	6.75	8	1
	2 1/2 in.	1.88	10.50	2.25	4.12	7.75	8	1 1/8
	3 in.	2.25	12.00	2.62	5.00	9.00	8	1 1/4
	4 in.	2.88	14.00	3.00	6.19	10.75	8	1 1/2
	5 in.	3.62	16.50	3.62	7.31	12.75	8	1 3/4
	6 in.	4.38	19.00	4.25	8.50	14.50	8	2
	8 in.	5.75	21.75	5.00	10.82	17.25	12	2
10 in.	7.25	26.50	6.50	12.75	21.75	12	2 1/2	
12 in.	8.62	30.00	7.25	15.00	24.38	12	2 3/4	

STANDARDS: NPS 24 and smaller in all classes conform to ASME B16.5. NPS 30 and larger conform to MSS SP-44.

FACING: End flanges are regularly furnished with a raised face having a serrated finish per MSS SP-6. The thickness of the flange dimension (C) includes the raised face for Class 150 and 300. For Class 600 through 2500, the flange dimension (C) does not include the 1/4-inch raised face.

BOLT HOLES: Bolt holes are 1/8-inch larger than the bolt diameter. Bolt holes straddle the center line.

The information presented on this sheet is correct at time of publication. Milwaukee/Hammond Valve reserves the right to change design and/or materials without notice. For our Installation, Operation and Maintenance Manual and the most current product information go to www.milwaukeevalve.com or www.hammondvalve.com.
 ⚠ State of California Prop 65 **WARNING:** Cancer and Reproductive Harm. For more information visit www.p65warnings.ca.gov.

