

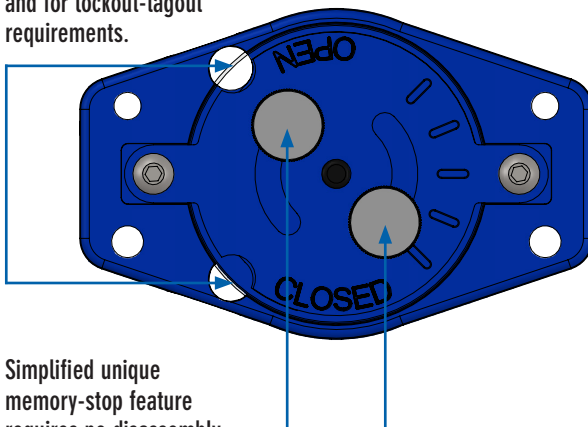
TIHL Handles (Thermal Insulated Handles – Locking) For Bronze & Brass Ball Valves



Bill of Material

Item	Description	Qty	Material
1	Cover	1	Polycarbonate
2	Thumb Screws	2	Stainless Steel
3	Button Head Hex Screws	2	Stainless Steel
4	Top Plate	1	Polycarbonate
5	Memory Stop Plate	1	Polycarbonate
6	Insulation Insert	1	Polystyrene
7	Body Insert	1	Polycarbonate
8	Engagement Plate	1	Stainless Steel
9	Housing	1	Polycarbonate
10	Stop Plate	1	Stainless Steel
11*	Double D Washer (J Size Only)	1	Stainless Steel
12	Insulation Shield	1	PETG

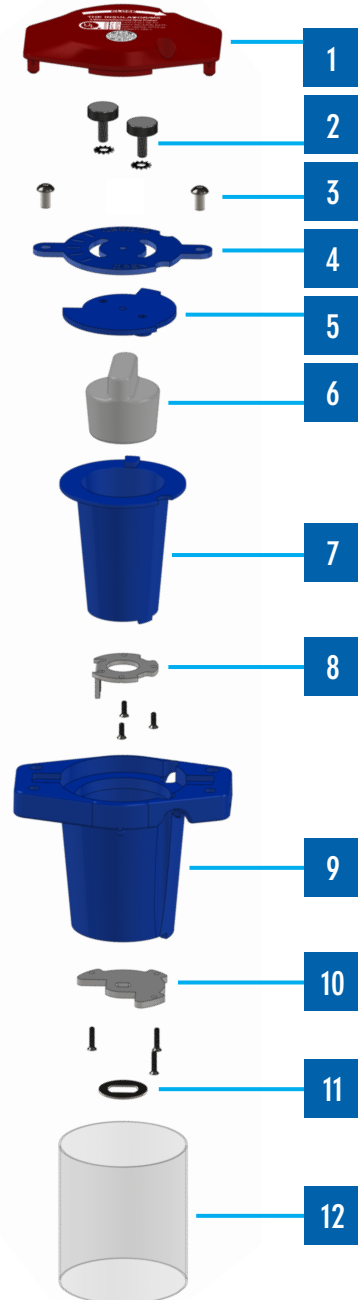
New design incorporates open and closed locking capability against unauthorized operation and for lockout-tagout requirements.



Simplified unique memory-stop feature requires no disassembly or handle removal to make adjustments.

Memory Stop Locking capability can also be achieved at a set intermediate position with simple field modification.

A few quick turns of the thumb screws eliminates need for hex keys or other tools.



The information presented on this sheet is correct at the time of publication. Milwaukee Valve reserves the right to change design and/or materials without notice. For our Installation, Operations and Maintenance Manual (IOM) and the most current product information, go to www.milwaukeevalve.com.

△ State of California Prop 65 Warning: Cancer and Reproductive Harm. For more information visit www.p65warnings.ca.gov.

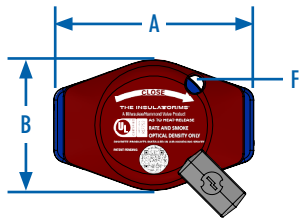


TIHL Handles (Thermal Insulated Handle – Locking) For Bronze & Brass Ball Valves

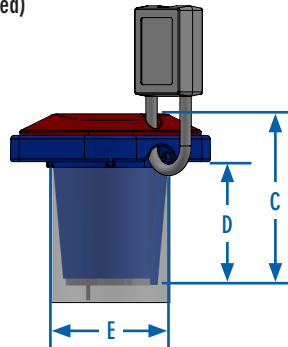


F-Series – Top

(Padlock/Tagout not included)

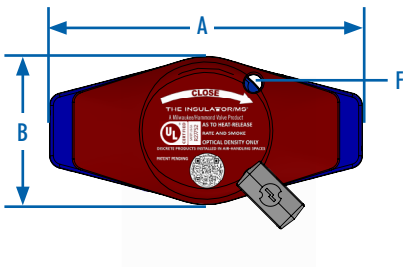


F-Series – Side

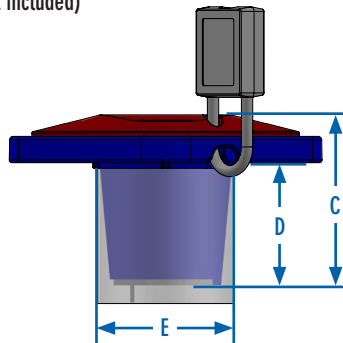


J-Series – Top

(Padlock/Tagout not included)



J-Series – Side



TIHL Dimensions

	Handle Length (A)	Handle Width (B)	Overall Height (C)	Housing Height (D)	Housing Width (E)	Lock Hole (F)
F Series (Small)	4.42	2.88	3.76	2.71	2.62	0.38
J Series (Large)	6.91	3.28	3.76	2.71	3.00	0.38

TIHL Ordering Information

	Part #	Size(s)	Valve*
F Series (Small)	TIHL-C1-940	1/4", 3/8"	BA-475B / BA-485B
		1/2"	BA-475B / BA-485B / BA-480 / BA-490
	TIHL-D-940	1/4", 3/8", 1/2"	BA-100 / BA-150 / BA-400 / BA-450
	TIHL-D3-940	1/4", 3/8", 1/2"	BA-300 / BA-350
	TIHL-F-940	3/4"	BA-100 / BA-150 / BA-400 / BA-450
		1"	BA-100 / BA-150
	TIHL-F3-940	3/4"	BA-300 / BA-350
J Series (Large)	TIHL-J-940	1"	BA-400 / BA-450
		1-1/4", 1-1/2"	BA-100 / BA-150 / BA-400 / BA-450
		2"	BA-100 / BA-150
	TIHL-J1-940	2"	BA-475B / BA-485B / BA-480 / BA-490
	TIHL-J3-940	1", 1-1/4", 1-1/2"	BA-300 / BA-350
	TIHL-K-940	2"	BA-400 / BA-450
	TIHL-K3-940	2"	BA-300 / BA-350

*TIHL will fit equivalent Milwaukee Valve UltraPure lead-free valves.

- To order the TIHL handle factory-assembled to the valve, add "TIHL" to the valve part number, (i.e. BA-150TIHL).
- TIHL handle is rated to 300°F.
- For installation of solder-end valves with the TIHL handle installed: Slide the plastic sleeve up to avoid contact with the valve body. Wrap the TIHL handle with a damp cloth to protect and draw heat away while directing the flame away from the center of the valve during heating.

The information presented on this sheet is correct at the time of publication. Milwaukee Valve reserves the right to change design and/or materials without notice. For our Installation, Operations and Maintenance Manual (IOM) and the most current product information, go to www.milwaukeevalve.com.

⚠ State of California Prop 65 Warning: Cancer and Reproductive Harm. For more information visit www.p65warnings.ca.gov.

