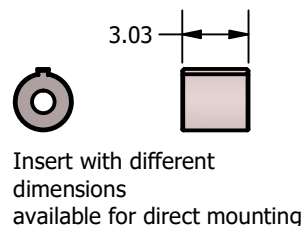
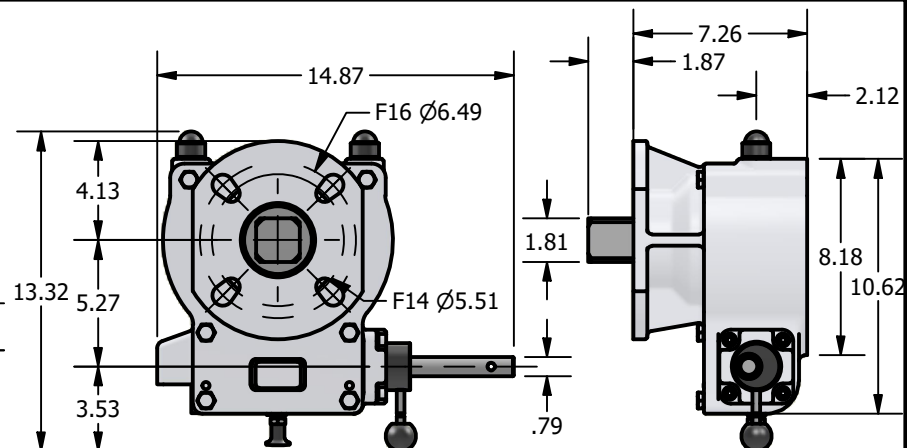
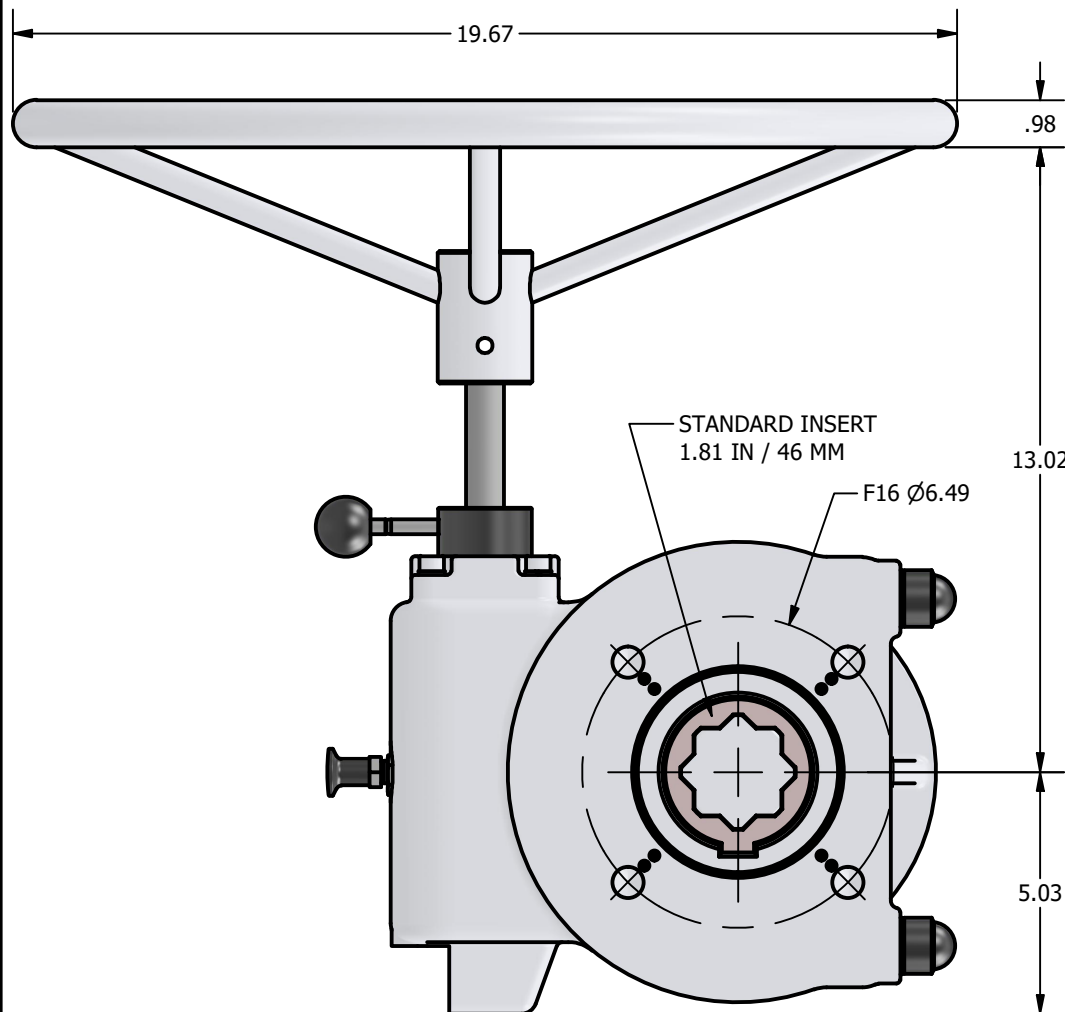


NOTES:
 THREAD FOR F14 IS 5/8-11 UNC
 THREAD FOR F16 IS 3/4-10 UNC



DESCRIPTION	MATERIAL
BODY	DUCTILE CAST IRON
COVER/FLANGE	DUCTILE CAST IRON
WORM RACK	DUCTILE CAST IRON
COVER/RACK	DUCTILE CAST IRON
QUADRANT	DUCTILE CAST IRON
WORM	CARBON STEEL
SHAFT	STAINLESS STEEL
COUPLING	STEEL
GASKET	NITRILE
O-RINGS	NITRILE
GREASE	LITHIUM
FASTENERS	STAINLESS STEEL
AXIAL BEARING	STEEL

DESCRIPTION

Quarter Turn Type: UT-ZM-309

NOTICE:

THIS DRAWING INCLUDES THE DESIGN AND PRINCIPLES DISCLOSED AND IS THE SOLE PROPERTY OF UNITORQ AND ITS AFFILIATES. IT IS SUBMITTED WITH THE UNDERSTANDING THAT IT IS NOT TO BE REPRODUCED, NOR COPIED IN WHOLE OR IN PART, NOR LOANED OR OTHERWISE COMMUNICATED TO ANY THIRD PARTY, NOR USED IN ANY MANNER DETRIMENTAL TO THE INTERESTS OF UNITORQ OR ANY OF ITS AFFILIATES WITHOUT THE EXPRESSED WRITTEN CONSENT OF UNITORQ. ACCEPTANCE OF THIS DRAWING WILL BE CONSTRUED AS AN AGREEMENT TO THE ABOVE.



2150 Boggs Road, Suite 410
 DULUTH, GEORGIA U.S.A. 30096
 Ph: 770-446-7074
 Fax: 770-447-1825
 www.unitorq.com

ISO 9001:2015
 CERTIFIED COMPANY



TYPE	TORQUE (In-Lbs)	RATIO	WEIGHT (lbs)
UT-ZM-309	30,977	1:70	83.8

PRODUCT:
 Quarter Turn Actuator

PART NUMBER:
 UT-ZM-309

SALES DRAWING NUMBER:

DWN BY:
 HP

DATE:
 1/25/2024

SCALE:
 N.T.S

REV.
 0