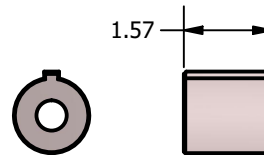
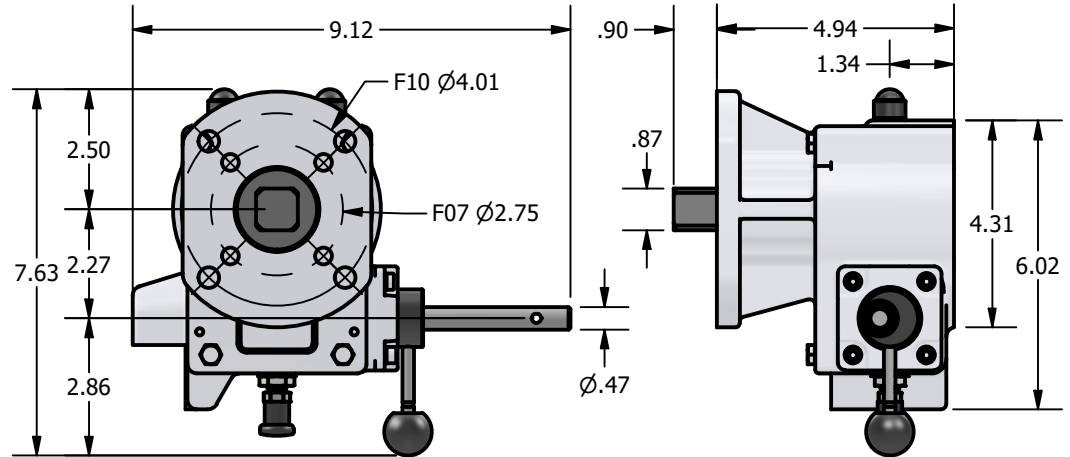
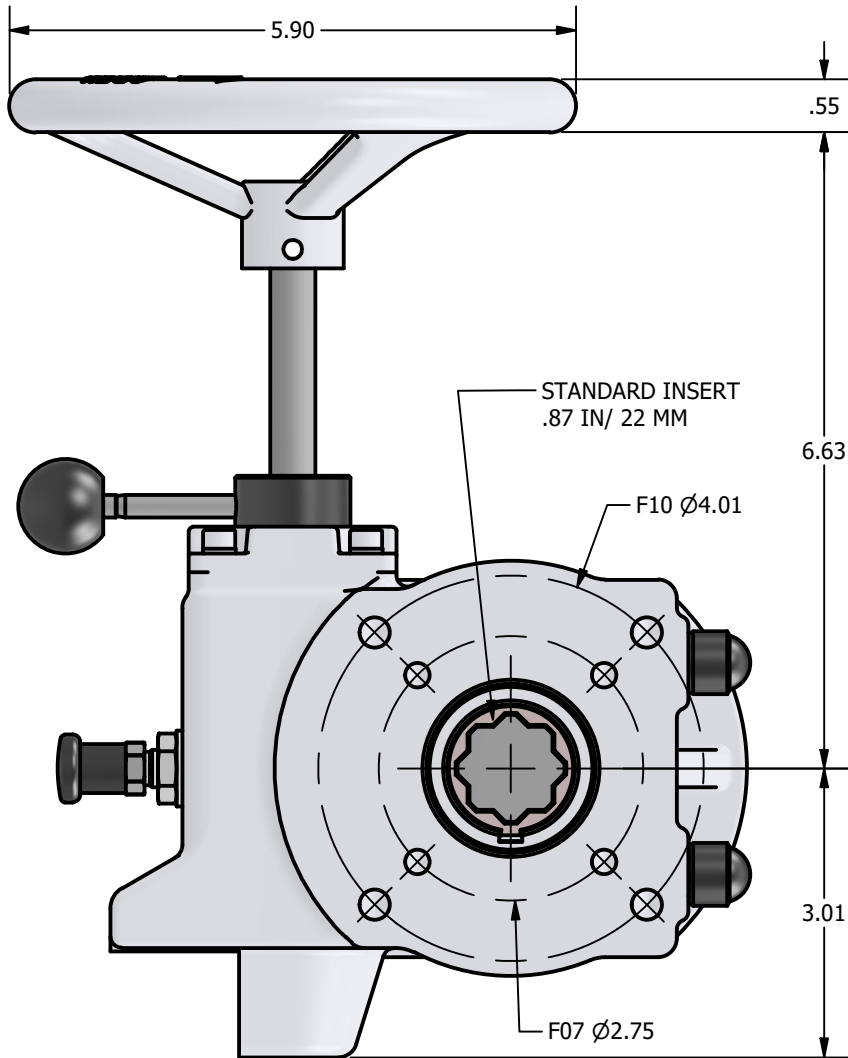


NOTE:  
 THREAD FOR F07 IS 5/16-18 UNC  
 THREAD FOR F10 IS 3/8-16 UNC



Optional insert with different dimensions  
 available for direct mounting

DESCRIPTION	MATERIAL
BODY	DUCTILE CAST IRON
COVER/FLANGE	DUCTILE CAST IRON
WORM RACK	DUCTILE CAST IRON
COVER/RACK	DUCTILE CAST IRON
QUADRANT	DUCTILE CAST IRON
WORM	CARBON STEEL
SHAFT	STAINLESS STEEL
COUPLING	STEEL
GASKET	NITRILE
O-RINGS	NITRILE
GREASE	LITHIUM
FASTENERS	STAINLESS STEEL
AXIAL BEARING	STEEL

#### DESCRIPTION

Quarter Turn Type: UT-ZM-31

#### NOTICE:

THIS DRAWING INCLUDES THE DESIGN AND PRINCIPLES DISCLOSED AND IS THE SOLE PROPERTY OF UNITORQ AND ITS AFFILIATES. IT IS SUBMITTED WITH THE UNDERSTANDING THAT IT IS NOT TO BE REPRODUCED, NOR COPIED IN WHOLE OR IN PART, NOR LOANED OR OTHERWISE COMMUNICATED TO ANY THIRD PARTY, NOR USED IN ANY MANNER DETRIMENTAL TO THE INTERESTS OF UNITORQ OR ANY OF ITS AFFILIATES WITHOUT THE EXPRESSED WRITTEN CONSENT OF UNITORQ. ACCEPTANCE OF THIS DRAWING WILL BE CONSTRUED AS AN AGREEMENT TO THE ABOVE.



2150 Boggs Road, Suite 410  
 DULUTH, GEORGIA U.S.A. 30096  
 Ph: 770-446-7074  
 Fax: 770-447-1825  
 www.unitorq.com



TYPE	TORQUE (In-Lbs)	RATIO	WEIGHT (lbs)
UT-ZM-31	3,098	1:44	14.33

PRODUCT:  
Quarter Turn Actuator

PART NUMBER:  
UT-ZM-31

SALES DRAWING NUMBER:

DWN BY:  
HP

DATE:  
1/25/2024

SCALE:  
N.T.S

REV.  
0